

# **DELHI TRANSCO LTD.**

STATE LOAD DISPATCH CENTER

## **PROGRESS REPORT**

\*\*\*\*\*

JUNE 2016

<b>S. No.</b>	<b>CONTENTS</b>	<b>Page No.</b>
<b>1.</b>	<b>Salient Features of Delhi Power System</b>	<b>3</b>
<b>2.</b>	<b>Performance of Generating Stations within Delhi</b>	<b>4</b>
<b>3.</b>	<b>Details of Outage of Generating Stations within Delhi</b>	<b>5-12</b>
<b>4.</b>	<b>Allocation of Power to Delhi from unallocated quota of central sector</b>	<b>13</b>
<b>5.</b>	<b>Allocation of Power to Discoms</b>	<b>14</b>
<b>6.</b>	<b>Power Availability Demand Position of Delhi at the time of occurrence of Peak Demand</b>	<b>15</b>
<b>7.</b>	<b>Power Availability Demand Position of Delhi at the time of occurrence of Maximum Un-Restricted Demand</b>	<b>16</b>
<b>8.</b>	<b>Source wise scheduled drawl from grid and Availability within Delhi</b>	<b>17-20</b>
<b>9.</b>	<b>Shedding Details</b>	<b>21-25</b>
<b>10.</b>	<b>Load Curve for the Day of Peak Demand</b>	<b>26</b>
<b>11.</b>	<b>Load Curve for the day of occurrence of Maximum Un-Restricted Demand</b>	<b>27</b>
<b>12.</b>	<b>Load Curve for the day of Maximum Energy Consumed</b>	<b>28</b>
<b>13.</b>	<b>Load Curve for the day of Maximum Un-Restricted Energy Demand</b>	<b>29</b>
<b>14.</b>	<b>Load Duration Curve</b>	<b>30</b>
<b>15.</b>	<b>Frequency Analysis</b>	<b>31</b>
<b>16.</b>	<b>Voltage Profile for significant 220kV Sub-Stations</b>	<b>32</b>
<b>17.</b>	<b>Voltage Profile for significant 400kV Sub-Stations</b>	<b>33-34</b>
<b>18.</b>	<b>Details of Capacitors Installations in Delhi</b>	<b>35-40</b>
<b>19.</b>	<b>Tripping Details of 400/220 KV System in Delhi Power System</b>	<b>41-46</b>
<b>20.</b>	<b>Details of Under frequency Relay operations in Delhi Power System</b>	<b>47</b>

Sr. No.	Features	JUN. 2015	JUN 2016
1	<b>Effective Generation Capacity within Delhi in MW</b>		
	Rajghat Power House	135	135
	Gas Turbine	270	270
	Pragati Power Corporation Ltd.	330	330
	Badapur Thermal Power Station	705	705
	Rithala GT	108	108
	Bawana	1372	1372
	TOWMCL	16	16
	Total	2936	2936
2	<b>Maximum Unrestricted Demand (MW)</b>	<b>5846</b>	<b>6260</b>
	Date	19.06.15	30.06.16
	Time	15.39.51	15.29.40
3	<b>Peak Demand met (MW)</b>	<b>5846</b>	<b>6260</b>
	Date	19.06.15	30.06.16
	Time	15.39.51	15.29.40
4	Peak Availability (MW)	5648	6322
5	Shortage (-) / Surplus (+) in MW	(-) 198	(+) 62
6	Percentage Shortage (-) / Surplus (+)	(-) 3.39	(+) 0.99
7	Maximum Energy Consume in a day (Mus)	119.098	130.580
8	Energy Consumed during the month	<b>3092.565</b>	<b>3490.409</b>
9	<b>Load Shedding in Mus</b>		
A)	Due to Grid Restrictions		
i)	Under Frequency Relay Operations	0.001	0.000
ii)	Manual Load shedding from DTL S/Stns.	0.119	0.073
iii)	Load Shedding due to low frequency / Low Voltage / TTC/ATC Violation		
	NDPL	0.475	0.084
	BRPL	0.804	0.570
	BYPL	0.069	0.025
	NDMC	0.022	0.000
	MES	0.000	0.000
iv)	Due to transmission Constraints in Central Sector	0.000	0.000
	<b>Total due to Grid Restriction</b>	<b>1.490</b>	<b>0.752</b>
B)	Due to Constraints in System in Mus		
	DTL	1.465	2.495
	NDPL	0.272	0.185
	BRPL	1.455	2.135
	BYPL	0.395	0.289
	NDMC	0.000	0.000
	MES	0.000	0.000
	Other Agencies	0.001	1.219
	<b>Total</b>	<b>3.588</b>	<b>6.323</b>
11	<b>Grand Total in Mus</b>	<b>5.078</b>	<b>7.075</b>

2. PERFORMANCE OF GENERATING STATIONS WITHIN DELHI DURING JUNE 2016

A) For the month of June 2016

All Figures in MUs

S. No	Stations	Gross Generation	Aux. Consumption	Net Generation	Availability (%)	Backing Down
1.	RPH	0.000	1.019	-1.019	0	-1.626
2.	GT	85.871	2.608	83.263	73.99	56.476
3.	PPCL	185.241	4.638	180.603	89.18	25.735
4.	BTPS	246.013	24.63	221.383	56.04	27.571
5.	Rithala	0.000	0.060	-0.060	<b>89.17</b>	61.008
6.	Bawana	152.845	5.768	147.077	68.91	518.346
7.	Towmcl	14.348	2.076	12.272	--	0
	<b>TOTAL</b>	<b>684.318</b>	<b>40.799</b>	<b>643.519</b>	<b>--</b>	<b>687.51</b>

B) For the Year 2016-17 (Upto June 2016)

Power Station	Effective Capacity (MW)	Net Generation in MUs for Jun 2016	Availability (%) for Jun 2016	PLF (%) for Jun 2016	Cumulative Generation in MUs upto Jun 2016 for the year 2016-17	Cumulative Availability in % upto Jun 2016 for the year 2016-17	Cumulative PLF in % upto Jun 2016 for the year 2016-17
RPH	135	-1.019	0	-1.02	-2.142	0	-1.03
GT	270	83.263	73.99	44.04	169.232	79.84	29.57
PPCL	330	180.603	89.18	78.02	529.560	90.87	75.40
BTPS	705	221.383	56.04	49.49	641.325	54.36	46.58
Rithala	108	-0.060	<b>89.17</b>	0	-0.182	89.17	0
Bawana	1372	147.077	68.91	15.06	376.174	67.25	12.84
Towmcl	16	12.272	--	--	35.135	--	--
<b>TOTAL</b>	<b>2936</b>	<b>643.519</b>	<b>--</b>	<b>--</b>	<b>1749.102</b>	<b>--</b>	<b>--</b>

### 3 DETAILS OF OUTAGES OF GENERATING STNS. WITHIN DELHI W.E.F. APRIL 2016

#### RPH

Unit No	Capacity in MW	Outage		Synchronization		Reason of Outage
		Date	Time	Date	Time	
1	67.5	08.05.15	13:40	--	--	Tripped on boiler tube leakage

Unit No	Capacity in MW	Outage		Synchronization		Reason of Outage
		Date	Time	Date	Time	
2	67.5	21.05.15	10:20	--	--	Stopped due to shortage of coal

#### (B) Gas Turbine

Unit No	Capacity in MW	Outage		Synchronization		Reason of Outage
		Date	Time	Date	Time	
1	30	30.03.16	13:52	17.04.16	10:45	Machine tripped as heavy jerk observed in Control room and 160 MVA Tr-I & II tripped at 220 KV end due to tripping of Geeta Colony to Wazirabad ckt. Machine not taken on load due to less demand from SLDC.
		17.04.16	10:45	17.04.16	18:45	Station shut down to attend ACW line.
		17.04.16	18:45	29.04.16	19:15	Stopped due to low demand and high frequency
		13.5.16	16:10	13.5.16	17:47	Machine stopped to replace the broken drain valve in the inlet line of ACW.
		15.5.16	08:40	15.5.16	11:00	machine stopped to attend the leakage of oil from LV bushing of Unit Transformer. Machine cleared by Electrical division at 11:00 hrs but machine not taken on load due to low schedule from SLDC.
		15.5.16	11:00	16.5.16	10:54	Machine stopped as per SLDC message
		23.5.16	15:46	25.5.16	15:30	Machine tripped due to tripping of 160 MVA Tr-I & II. After that machine not taken on load due to less demand
		28.5.16	12:01	6.6.16	09:58	Stopped due to low demand and high frequency
		10.6.16	16:54	10.6.16	17:08	machine came on FSNL as both the ICT 160 MVA TX-I & II tripped due to jek in the system.
13.6.16	07:11	13.6.16	09:00	Machine tripped as heavy jerk observed in the system as both 160 MVA Tx-I & II tripped.		

Unit No	Capacity in MW	Outage		Synchronization		Reason of Outage
		Date	Time	Date	Time	
2	30	28.01.16	01:20	31.03.16	23:59	Stopped due to low demand and high frequency
		01.04.16	18:00	17.04.16	10:45	
		17.04.16	10:45	17.04.16	18:45	Station shut down to attend ACW line.
		17.04.16	18:45	5.5.16	15:11	Stopped due to low demand and high frequency
		5.5.16	15:57	5.5.16	16:40	Machine stopped due to problem in ACW line.
		7.5.16	17:02	7.5.16	17:52	Problem in battery charger
		19.5.16	00:02	19.5.16	01:03	T-Communication link inoperative
		23.5.16	15:46	23.5.16	15:50	Machine came on FSNL due to tripping of 160 MVA Tr-I & II.
		25.5.16	06:09	25.5.16	06:52	T-Communication link inoperative
		26.5.16	18:15	26.5.16	23:20	Machine tripped on high exhaust trip alarm.
		29.5.16	00:50	06.06.16	08:56	Stopped due to low demand and high frequency
		10.6.16	16:54	10.6.16	17:00	machine came on FSNL as both the ICT 160 MVA TX-I & II tripped due to jek in the system.
13.6.16	07:11	13.6.16	13:40	Machine tripped as heavy jerk observed in the system as both 160 MVA Tx-I & II tripped.		

Unit No	Capacity in MW	Outage		Synchronization		Reason of Outage
		Date	Time	Date	Time	
3	30	01.02.16	19:15	17.04.16	10:45	Stopped due to low demand and high frequency
		17.04.16	10:45	17.04.16	18:45	Station shut down to attend ACW line.
		17.04.16	18:45	12.05.16	12:00	Stopped due to low demand and high frequency
		12.5.16	12:00	19.5.16	23:09	Machine under shut down as permit taken by Electrical division to replace its 66 KV breaker.
		19.5.16	23:09	20.5.16	20:52	Machine available but not taken on load due to less schedule from SLDC
		20.5.16	23:58	06.06.16	15:40	Stopped due to low demand and high frequency
		6.6.16	18:06	9.6.16	15:50	
		9.6.16	18:46	30.6.16	14:30	
		30.6.16	14:40	30.6.16	16:20	Machine tripped due'S' communication link inoperative.
		30.6.16	17:19	30.6.16	18:05	machine tripped on false alarm in Turbine or Accessories Area.

Unit No	Capacity in MW	Outage		Synchronization		Reason of Outage
		Date	Time	Date	Time	
4	30	29.01.16	14:00	17.04.16	10:45	Stopped due to low demand and high frequency
		17.04.16	10:45	17.04.16	18:45	Station shut down to attend ACW line.
		17.04.16	18:45	16.05.16	15:04	Stopped due to low demand and high frequency
		16.5.16	18:04	18.5.16	16:12	Machine stopped due to low schedule from SLDC
		21.5.16	16:05	21.5.16	17:57	supply of Computer failed.
		23.5.16	15:46	24.5.16	15:25	Machine tripped due to tripping of 160 MVA Tr-I& II. After that machine nottaken on load due to less demand
		24.5.16	16:27	06.06.16	11:12	Stopped due to low demand and high frequency
		6.6.16	20:10	7.6.16	10:34	
		10.6.16	16:54	10.6.16	17:08	machine came on FSNL as both the ICT 160 MVA TX-I & II tripped due to jek in the system.
		10.6.16	18:32	13.6.16	12:55	Stopped due to low demand and high frequency
		13.6.16	22:38	20.6.16	08:33	
		20.6.16	16:30	24.6.16	12:14	
		24.6.16	17:45	30.6.16	10:07	
		30.6.16	19:00	30.6.16	19:55	Machine tripped on over temperature alarm

Unit No	Capacity in MW	Outage		Synchronization		Reason of Outage
		Date	Time	Date	Time	
5	30	14.03.16	19:15	01.04.16	15:05	Stopped due to low demand and high frequency
		11.04.16	19:06	11.04.16	21:22	
		17.04.16	10:45	17.04.16	18:38	Station shut down to attend ACW line.
		18.04.16	12:54	24.04.16	10:55	Stopped due to low demand and high frequency
		29.04.16	19:15	13.05.16	17:10	
		13.5.16	19:30	16.5.16	13:29	machine stopped to attend leakage of oil from IGV
		20.5.16	23:42	21.5.16	18:08	
		21.5.16	18:55	21.5.16	20:04	Machine tripped on high exhaust temperature
		22.5.16	11:46	23.5.16	11:30	Stopped due to low demand and high frequency
		23.5.16	11:55	23.5.16	12:30	machine desynchronise to check the position of Bleed valve.
		23.5.16	15:46	24.5.16	15:42	Machine tripped due to tripping of 160 MVA Tr-I& II. After that machine nottaken on load due to less demand
		25.5.16	16:35	26.5.16	19:05	Stopped due to low demand and high frequency
		27.5.16	00:07	27.5.16	17:20	
		27.5.16	17:25	28.5.16	11:07	
		29.5.16	22:10	29.5.16	22:22	Machine came on FSNL due to tripping of 160 MVA Tr-I& II.
		10.6.16	16:54	10.6.16	17:08	machine came on FSNL as both the ICT 160 MVA TX-I & II tripped due to jek in the system.
		11.6.16	20:45	13.6.16	11:12	Stopped due to low demand and high frequency
		20.6.16	01:04	23.6.16	15:59	Machine stopped to inspect the low load reason on mahine by M/s BGGTS
		23.6.16	16:00	24.6.16	16:18	Stopped due to low demand and high frequency
		24.6.16	18:05	25.6.16	10:10	

Unit No	Capacity in MW	Outage		Synchronization		Reason of Outage
		Date	Time	Date	Time	
6	30	19.03.16	11:40	6.04.16	12:00	Stopped due to low demand and high frequency
		06.04.16	12:00	11.04.16	18:10	machine taken under S/d for Combustion Inspection & Boroscopic Inspection
		11.04.16	21:06	17.04.16	10:45	Stopped due to low demand and high frequency
		17.04.16	10:45	17.04.16	18:45	Station shut down to attend ACW line.
		17.04.16	18:45	18.04.16	11:30	Stopped due to low demand and high frequency
		24.04.16	11:44	13.05.16	18:45	
		13.5.16	20:15	16.5.16	17:23	Machine tripped due to tripping of 160 MVA Tr-I& II.
		23.5.16	15:46	23.5.16	16:37	
		29.5.16	01:50	02.06.16	10:48	Machine stopped due to low schedule from SLDC
		10.6.16	16:54	10.6.16	17:08	machine came on FSNL as both the ICT 160 MVA TX-I & II tripped due to jek in the system.
		11.6.16	20:45	13.6.16	20:34	Stopped due to low demand and high frequency
		20.6.16	16:35	24.6.16	13:20	
		24.6.16	18:08	25.6.16	10:04	

Unit No	Capacity in MW	Outage		Synchronization		Reason of Outage
		Date	Time	Date	Time	
STG -1	30	29.1.16	14:00	01.04.16	18:05	M/c cleared from maintainence side but Stopped due to low demand and high frequency
		17.04.16	10:45	17.04.16	18:45	Station shut down to attend ACW line.
		17.04.16	18:45	29.04.16	19:15	Stopped due to low demand and high frequency
		01.5.16	21:27	01.5.16	22:59	Machine tripped due to failure of LT supply.
		13.5.16	16:10	13.5.16	18:48	Machine stopped due to problem in ACW line.
		23.5.16	15:46	23.5.16	17:25	Machine tripped due to tripping of 160 MVA Tr-I& II.
		23.5.16	19:20	24.5.16	14:04	Stopped due to low demand and high frequency
		29.5.16	00:50	06.06.16	11.44	
		10.6.16	16:54	10.6.16	17:53	machine tripped as both the ICT 160 MVA TX-I & II tripped due to jek in the system.
		13.6.16	07:11	13.6.16	10:45	Machine tripped as heavy jerk observed in the system as both 160 MVA Tx-I & II tripped.

Unit No	Capacity in MW	Outage		Synchronization		Reason of Outage
		Date	Time	Date	Time	
STG -2	30	29.01.16	14:00	17.04.16	10:45	M/c cleared from maintainence side Stopped due to low demand and high frequency
		17.04.16	10:45	17.04.16	18:45	Station shut down to attend ACW line.
		17.04.16	18:45	19.05.16	07:45	Stopped due to low demand and high frequency
		21.5.16	16:04	21.5.16	19:15	Machine tripped due to tripping of GT#4
		23.5.16	15:46	23.5.16	17:25	Machine tripped due to tripping of 160 MVA Tr-I& II.
		23.5.16	17:25	06.06.16	17.04	Stopped due to low demand and high frequency
		6.6.16	17:19	6.6.16	19:38	machine tripped on Hot well very high alarm as the parameter of STG# 2 got freezed and actual value of the same was not appearing on BCD.
		6.6.16	20:10	7.6.16	12:55	Stopped due to low demand and high frequency
		10.6.16	16:54	13.6.16	18:06	machine tripped as both the ICT 160 MVA TX-I & II tripped due to jek in the system. Machine not taken on load due low demand.
		13.6.16	22:38	20.6.16	11:40	Stopped due to low demand and high frequency
		20.6.16	16:35	24.6.16	14:54	
		24.6.16	17:47	30.6.16	13:45	
		30.6.16	19:00	30.6.16	22:03	Machine tripped due to tripping of GT#4



Unit No	Capacity in MW	Outage		Synchronization		Reason of Outage
		Date	Time	Date	Time	
STG-3	30	19.03.16	18:15	01.04.16	17:45	Stopped due to low demand and high frequency
		01.04.16	18:30	01.04.16	19:26	Tripped on Gen. Class-A relay
		01.04.16	19:32	01.04.16	20:07	Tripped on Gen. Class-A relay
		11.04.16	21:06	11.04.16	21:45	Machine stopped due to stopping of GT#6.
		17.04.16	10:45	17.04.16	19:57	Station shut down to attend ACW line.
		29.04.16	19:15	09.05.16	15:52	Stopped due to low demand and high frequency
		16.5.16	16:02	16.5.16	16:30	Machine stopped to attend false over speed alarm
		21.5.16	21:28	21.5.16	23:52	Machine tripped on Turbine FJB shaft vibration very high
		23.5.16	15:46	23.5.16	17:30	Machine tripped due to tripping of 160 MVA Tr-I& II.
		29.5.16	22:10	29.5.16	23:45	Machine tripped due to tripping of 160 MVA Tr-I& II.
		31.5.16	20:16	31.5.16	23:45	SNH feeder tripped & found earth fault.
		2.6.16	11:36	2.6.16	14:00	Machine tripped while changing the load control mode from auxiliary to pressure.
		10.6.16	16:54	10.6.16	17:38	machine tripped as both the ICT 160 MVA TX-I & II tripped due to jek in the system.
		11.6.16	20:45	13.6.16	13:26	Stopped due to low demand and high frequency
		13.6.16	21:30	13.6.16	22:30	Machine tripped on Class A relay.
		19.6.16	07:01	19.6.16	08:02	Machine tripped on FJB shaft vibration very high.
		20.6.16	16:35	24.6.16	15:16	Stopped due to low demand and high frequency
24.6.16	18:12	25.6.16	11:55			

**(C) PRAGATI**

Unit No	Capacity in MW	Outage		Synchronization		Reason of Outage
		Date	Time	Date	Time	
1	104	01.04.16	00:00	06.04.16	06:00	Stopped due to low demand and high frequency
		01.05.16	05:58	01.05.16	13:15	Unit stopped by stn.
		07.05.16	11:37	07.05.16	12:34	Unit tripped.
		23.05.16	22:16	24.05.16	10:01	Unit stopped and started due to low demand and high frequency
		09.06.16	14:33	09.06.16	15:10	GT#1 tripped on grid disturbance.
		18.06.16	07:09	18.06.16	09:13	GT#1 tripped on grid disturbance.
		18.06.16	10:09	18.06.16	10:38	GT#1 tripped.

Unit No	Capacity in MW	Outage		Synchronization		Reason of Outage
		Date	Time	Date	Time	
2	104	01.04.16	00:00	01.04.16	03:18	Stopped due to low demand and high frequency
		06.04.16	08:40	11.04.16	04:31	G.T.-2 was swpped by G.T. -1 and started as desired
		15.04.16	06:06	15.04.16	12:02	Unit stopped
		24.04.16	14:15	25.04.16	06:48	Stopped due to low demand and high frequency
		28.04.16	12:44	28.04.16	13:35	Unit tripped
		06.05.16	11:28	06.05.16	16:00	Unit tripped due to grid disturbance
		06.05.16	16:00	11.05.16	13:27	Unit tripped
		26.05.16	21:18	26.05.16	22:55	Unit tripped
		05.06.16	03:59	08.06.16	15:17	GT2 tripped
		10.06.16	16:50	10.06.16	17:38	GT#2 tripped on grid disturbance.
		13.06.16	19:49	13.06.16	20:54	GT#2 tripped on grid disturbance.
		18.06.16	07:09	18.06.16	09:54	GT#2 tripped on grid disturbance.
19.06.26	05:58	20.06.16	06:00	GT#2 stopped as desired by DTL		

Unit No	Capacity in MW	Outage		Synchronization		Reason of Outage
		Date	Time	Date	Time	
STG	122	01.04.16	00.00	01.04.16	09.07	Stopped due to low demand and high frequency
		21.04.16	14.59	21.04.16	16.25	STG Tripped
		24.04.16	13.15	24.04.16	21.27	Unit stopped
		29.04.16	11.58	29.04.16	12.46	STG Tripped
		02.05.16	15.57	02.05.16	16.54	STG Tripped
		06.05.16	11.28	06.05.16	12.12	Unit tripped due to grid disturbance
		07.05.16	11.40	07.05.16	13.30	Unit tripped alongwith G.T.-1
		08.05.16	17.49	08.05.16	19.35	STG Tripped
		10.05.16	17.55	10.05.16	23.58	STG Tripped
		13.05.16	19.02	13.05.16	20.50	Unit stopped
		05.06.16	14:20	05.06.16	15:06	STG tripped on grid disturbance.
		09.06.16	14:33	09.06.16	16:22	STG tripped on grid disturbance.
		10.06.16	16:50	10.06.16	18:00	STG tripped on grid disturbance.
		13.06.16	12:14	13.06.16	17:46	STG stopped.
		13.06.16	19:49	13.06.16	21:34	STG tripped on grid disturbance.
		18.06.16	07:09	18.06.16	10:05	STG tripped on grid disturbance.
		18.06.16	10:09	18.06.16	10:57	STG tripped on GT#1 tripped
27.06.16	19:06	28.06.16	03:36	STG stopped.		

**(D) BADARPUR THERMAL POWER STATION**

Unit	Capacity in MW	Outage		Synchronization		Reason of Outage
		Date	Time	Date	Time	
1	95	01.04.15	00.00	30.06.16	23.59	Stopped due to low demand and high frequency

Unit	Capacity in MW	Outage		Synchronization		Reason of Outage
		Date	Time	Date	Time	
2	95	24.09.15	19.52	30.06.16	23.59	Stopped due to low demand and high frequency

Unit	Capacity in MW	Outage		Synchronization		Reason of Outage
		Date	Time	Date	Time	
3	95	09.10.15	01.00	30.06.16	23.59	Stopped due to low demand and high frequency

Unit	Capacity in MW	Outage		Synchronization		Reason of Outage
		Date	Time	Date	Time	
4	210	12.12.15	14.30	04.04.16	07.47	Stopped due to low demand and high frequency
		11.04.16	14.03	12.04.16	20.11	Economizer tube leakage
		24.04.16	1621	24.04.16	21.52	PA Fan A lub oil sys temp high
		01.05.16	16.30	01.05.16	17.55	Human Error(Vacuum low)
		10.05.16	05.34	11.05.16	01.39	Boiler Drum Impulse line lkg
		11.05.16	09.08	21.05.16	03.10	Gen Seal problem
		21.05.16	04.04	21.05.16	04.38	ID Fan A Thermal Overload
		21.05.16	15.10	21.05.16	16.45	Relay malfunction (air flow low)
		03.06.16	21.30	05.06.16	07.03	Water Platen Lkg
09.06.16	14.27	09.06.16	18.22	Grid Disturbance		

Unit	Capacity in MW	Outage		Synchronization		Reason of Outage
		Date	Time	Date	Time	
5	210	24.04.16	16.21	24.04.16	21.52	Stopped due to temp. high.
		06.06.16	09.50	07.06.16	13.53	Water leakage
		09.06.16	14.28	09.06.16	17.11	Tripped due to grid disturbance

**(E) BAWANA CCGT POWER STATION**

Unit	Capacity in MW	Outage		Synchronization		Reason of Outage
		Date	Time	Date	Time	
1	216	16.07.15	02.18	30.06.16	23.59	Machine tripped due to compressor stalling alarm

Unit	Capacity in MW	Outage		Synchronization		Reason of Outage
		Date	Time	Date	Time	
2	216	24.03.16	00.00	03.05.16	06.00	Stopped due to low demand and high frequency
		03.05.16	06.00	03.05.16	09.30	Machine shutdown for planned mtc.
		03.05.16	09.30	13.06.16	15.00	Stopped due to low demand and high frequency
		13.06.16	15.00	16.06.16	17.15	Machine shut down for planned maintenance due to annual testing of generator transformer .
		16.06.16	17.15	26.06.16	09.24	Stopped due to low demand and high frequency

Unit	Capacity in MW	Outage		Synchronization		Reason of Outage
		Date	Time	Date	Time	
STG-1	254	28.03.16	00.00	15.04.16	10.00	Planned Shut down.
		15.04.16	10.00	03.05.16	06.00	Stopped due to low demand and high frequency
		03.05.16	06.00	03.05.16	09.30	Machine shutdown for planned mtc.
		03.05.16	09.30	13.06.16	15.00	Stopped due to low demand and high frequency
		13.06.16	15.00	16.06.16	17.15	Machine shut down for planned maintenance due to annual testing of generator transformer .
		16.06.16	17.15	26.06.16	15.20	Stopped due to low demand and high frequency

Unit	Capacity in MW	Outage		Synchronization		Reason of Outage
		Date	Time	Date	Time	
3	216	08.01.16	23.15	18.04.16	05.23	Stopped due to low demand and high frequency
		18.04.16	11.16	18.04.16	19.12	Unit tripped
		03.05.16	06.08	03.05.16	08.57	Machine shutdown for planned mtc.
		23.05.16	19.04	30.06.16	23.59	Stopped due to low demand and high frequency

Unit	Capacity in MW	Outage		Synchronization		Reason of Outage
		Date	Time	Date	Time	
4	216	08.01.16	23.15	03.05.16	06.00	Stopped due to low demand and high frequency
		03.05.16	06.00	03.05.16	09.30	Machine shutdown for planned mtc.
		03.05.16	09.30	27.05.16	01.12	Stopped due to low demand and high frequency
		30.05.16	11.16	30.06.16	23.59	

Unit	Capacity in MW	Outage		Synchronization		Reason of Outage
		Date	Time	Date	Time	
STG-2	254	28.03.16	00.00	30.04.16	23.59	Planned shutdown
		03.05.16	06.00	03.05.16	09.30	Machine shutdown for planned mtc.
		03.05.16	06.10	03.05.16	10.39	Machine shutdown for planned mtc.
		06.05.16	16.45	06.05.16	17.44	Unit tripped
		23.05.16	19.06	27.05.16	08.24	Stopped due to low demand and high frequency
		27.05.16	11.18	30.06.16	23.59	Stopped due to low demand and high frequency

**(F) RITHALA POWER STATION**

Unit	Capacity in MW	Outage		Synchronization		Reason of Outage
		Date	Time	Date	Time	
1	31.8	19.03.13	17:32	30.06.16	23.59	Stopped due to low demand and high frequency

Unit	Capacity in MW	Outage		Synchronization		Reason of Outage
		Date	Time	Date	Time	
2	31.8	07.06.13	22:41	30.06.16	23.59	Stopped due to low demand and high frequency

Unit	Capacity in MW	Outage		Synchronization		Reason of Outage
		Date	Time	Date	Time	
STG	31.8	07.06.13	22:38	30.06.16	23.59	Stopped due to low demand and high frequency

**ALLOCATION OF POWER TO DELHI**

A)

**Time block 00.00hrs. to 24.00hrs. @ 0% allocation from Unallocated Quota from 01.04.2016**

Name of the Stn	Installed capacity	Total Un-allocated	Basic Allocation	Basic Allocation at periphery	Allocation out of Unallocated Quota	Allocation out of Un-allocation Quota at Delhi periphery	Total allocation at Delhi periphery
1	2	3	4	5	6	7	(8)=(5)+(7)
<b><u>NTPC STATIONS</u></b>							
Singrauli STPS	2000	300	150	130	0	0	130
Rihand-I	1000	150	100	87	0	0	87
Rihand Stage -II	1000	150	126	109	0	0	109
Rihand Stage -III	1000	150	132	115	0	0	115
ANTA GPS	419	63	44	41	0	0	41
Auriya GPS	663.36	99	72	67	0	0	67
Dadri GPS	829.78	129	91	85	0	0	85
Dadri NCTPS (Th)	840	0	756	657	0	0	657
Dadri NCTPS (Th) Stage-II	980	147	735	639	0	0	639
Unchahaar-I TPS	420	20	24	21	0	0	21
Unchahaar-II TPS	420	63	47	41	0	0	41
Unchahaar-III TPS	210	31	29	25	0	0	25
Koldam HEP	800	120	56	53	0	0	53
<b>TOTAL</b>	<b>10582</b>	<b>1422</b>	<b>2362</b>	<b>2069</b>	<b>0</b>	<b>0</b>	<b>2069</b>
<b><u>NHPC</u></b>							
Baira Suil HPS	180	0	20	19	0	0	19
Salal HPS	690	0	80	76	0	0	76
Tanakpur HEP	94	0	12	11	0	0	11
Chamera HEP	540	0	43	41	0	0	41
Chamera-II HEP	300	54	40	38	0	0	38
Chamera-III HEP	231	35	29	28	0	0	28
URI-I HEP	480	0	53	50	0	0	50
URI-II HEP	240	0	32	31	0	0	31
Sewa HEP	120	18	16	15	0	0	15
Dhauri Ganga HEP	280	42	37	35	0	0	35
Dulhasti HEP	390	58	50	48	0	0	48
Parbati-III HEP	520	66	66	63	0	0	63
<b>TOTAL</b>	<b>4065</b>	<b>272</b>	<b>479</b>	<b>455</b>	<b>0</b>	<b>0</b>	<b>455</b>
<b><u>NPC</u></b>							
Narora APS	440	64	47	41	0	0	41
RAPP (C )	440	64	56	49	0	0	49
<b>TOTAL</b>	<b>880</b>	<b>128</b>	<b>103</b>	<b>89</b>	<b>0</b>	<b>0</b>	<b>89</b>
<b><u>SVJNL</u></b>							
Nathpa Jhakri HEP	1500	149	142	135	0	0	135
<b><u>THDC</u></b>							
Tehri Hydro	1000	99	63	60	0	0	60
Koteshwar HEP	400	40	39	37	0	0	37
<b>TOTAL</b>	<b>1400</b>	<b>139</b>	<b>102</b>	<b>97</b>	<b>0</b>	<b>0</b>	<b>97</b>
<b>Total</b>	<b>18427</b>	<b>2110</b>	<b>3188</b>	<b>2846</b>	<b>0</b>	<b>0</b>	<b>2846</b>
<b><u>Allocation from ER and Tala HEP</u></b>							
Farakka	1600	0	22	19	0	0	19
Kahalgaon	840	0	51	43	0	0	43
Talchar	1000	0	0	0	0	0	0
Tala HEP	1020	153	30	25	0	0	25
Kahalgaon-II	1500	0	157	131	0	0	131
<b>Total ER</b>	<b>5960</b>	<b>153</b>	<b>261</b>	<b>217</b>	<b>0</b>	<b>0</b>	<b>217</b>
<b><u>Joint Venture</u></b>							
Jhajjar TPS	1500	114	643	577	0	0	577
Ultra Mega Projects							
Sasan	3960	0	446	383	0	0	383
<b>Grand Total</b>	<b>29847</b>	<b>2377</b>	<b>4536</b>	<b>4023</b>	<b>0</b>	<b>0</b>	<b>4023</b>

**5 ALLOCATION OF POWER TO DISCOMS**

**A) ALLOCATION OF POWER TO VARIOUS LICENCEES AS PER ORDER OF DERC AND DECISION OF GNCTD FOR ALLOCATION OF CENTRAL SECTOR STATIONS (DADRI THERMAL & BTPS) AND STATE SECTOR GENERATING STATIONS w.e.f. 06.08.2013.**

**(Allocation In % )**

**(A) 10.00hrs. to 17.00hrs.**

SOURCES	LICENSEES					
	NDMC	MES	NDPL	BRPL	BYPL	TOTAL
1. Central Sector without Dadri (Th)	0	0	29.18	43.58	27.24	100.00
2. Dadri (Th)	16.63	0	24.22	36.86	22.39	100.00
3. BTPS	17.73	7.09	21.81	33.2	20.17	100.00
4. RPH	0	0	29.025	44.133	26.842	100.00
5. GT	0	0	29.02	44.16	26.82	100.00
6. Pragati	30.3	0	20.22	30.78	18.7	100.00
7. DVC	0	0	29.18	43.58	27.24	100.00
8. BAWANA CCGT*	7.30	1.82	20.688	30.888	19.304	80.00

**(B) 00.00hrs. to 10.00hrs. and 17.00hrs. to 24.00hrs.**

SOURCES	LICENSEES					
	NDMC	MES	NDPL	BRPL	BYPL	TOTAL
1. Central Sector without Dadri (Th)	0	0	29.18	43.58	27.24	100.00
2. Dadri (Th)	16.53	0	24.22	36.86	22.39	100.00
3. BTPS	17.73	7.09	21.81	33.2	20.17	100.00
4. RPH	0	0	29.025	44.133	26.842	100.00
5. GT	0	0	29.02	44.16	26.82	100.00
6. Pragati	30.3	0	20.22	30.78	18.7	100.00
7. DVC	0	0	29.18	43.58	27.24	100.00
8. BAWANA CCGT*	7.30	1.82	20.688	30.888	19.304	80.00

\* 20% POWER OF BAWANA CCGT ALLOCATED TO HARYANA (10%) & PUNJAB (10%)

**6 POWER AVAILABILITY-DEMAND POSITION AT THE TIME OF PEAK DEMAND MET DURING JUNE 2016**

All figures in MW

Date	Time of peak demand	Generation within Delhi								Import from the Grid	Schedule from the Grid	OD(-)/UD(+)	Demand met	Shedding	Un-Restricted Demand
		RPH	GT	PPCL	Rithala	Bawana	Towmel	BTPS	Total						
(1)	(2)	(3)	(4)	(5)	(6)	(7)	(8)	(9)= (3) to (8)	(10)	(11)	(12)= (11) - (10)	(13)= (11)+ (12)	(14)	(15)= (13)+ (14)	
1	15.49.06	0	29	263	0	260	11	321	884	4355	4286	69	5239	0	5239
2	16.03.40	0	61	288	0	264	11	317	941	4684	4601	83	5625	14	5639
3	16.02.49	0	60	294	0	279	16	356	1005	4805	4739	66	5810	0	5810
4	23.55.04	0	63	295	0	280	16	169	823	4851	4906	-55	5674	37	5711
5	00.01.46	0	63	296	0	274	15	161	809	4864	4884	-20	5673	38	5711
6	15.02.40	0	158	144	0	253	15	176	746	5254	5294	-40	6000	70	6070
7	15.03.49	0	153	146	0	251	12	287	849	4885	5068	-183	5734	16	5750
8	15.20.55	0	162	150	0	258	18	323	911	5066	4966	100	5977	0	5977
9	14.27.33	0	156	258	0	235	18	358	1025	4870	4675	195	5895	5	5900
10	15.12.54	0	156	258	0	235	18	358	1025	5001	4927	74	6026	6	6032
11	00.01.05	0	140	265	0	255	18	314	992	4182	4386	-204	5174	1	5175
12	23.52.04	0	56	262	0	255	18	327	918	4336	4103	233	5254	28	5282
13	15.16.48	0	128	183	0	253	17	356	937	4926	4729	197	5863	0	5863
14	23.30.09	0	139	266	0	253	16	325	999	4601	4475	126	5600	2	5602
15	15.29.56	0	138	286	0	255	16	330	1025	4765	4808	-43	5790	0	5790
16	23.02.38	0	139	292	0	293	16	326	1066	4458	4391	67	5524	0	5524
17	15.51.19	0	137	293	0	255	16	357	1058	4806	4860	-54	5864	0	5864
18	15.13.39	0	137	266	0	264	16	357	1040	4660	4608	52	5700	0	5700
19	23.25.19	0	139	146	0	252	16	320	873	4753	4827	-74	5626	25	5651
20	11.58.34	0	144	299	0	118	16	344	921	4621	4631	-10	5542	0	5542
21	15.28.18	0	66	263	0	0	16	331	676	4946	4953	-7	5622	38	5660
22	15.19.08	0	66	302	0	-3	16	342	723	4902	4949	-47	5625	0	5625
23	16.05.07	0	65	263	0	-2	16	335	677	4792	4745	47	5469	12	5481
24	15.06.29	0	114	297	0	-5	16	365	787	5211	5147	64	5998	0	5998
25	13.57.40	0	129	300	0	0	16	365	810	4905	4695	210	5715	0	5715
26	22.51.55	0	144	266	0	254	16	322	1002	4738	4723	15	5740	0	5740
27	22.55.23	0	134	173	0	257	16	336	916	5038	4935	103	5954	3	5957
28	00.00.10	0	135	172	0	255	16	344	922	4812	4849	-37	5734	14	5748
29	15.04.29	0	139	295	0	252	12	345	1043	4978	4810	168	6021	3	6024
30	15.29.40	0	164	295	0	298	16	349	1122	5138	5200	-62	6260	0	6260

**POWER AVAILABILITY- DEMAND POSITION AT THE TIME OF MAXIMUM UNRESTRICTED DEMAND DURING JUNE 2016**

Date	Time of peak demand	Generation within Delhi								Import from the Grid	Schedule from the Grid	OD(-)/UD(+)	Demand met	Shedding	Un-Restricted Demand
		RPH	GT	PPCL	Rithala	Bawana	Towmcl	BTPS	Total						
(1)	(2)	(3)	(4)	(5)	(6)	(7)	(8)	(9)= (3) to (8)	(10)	(11)	(12)= (11) - (10)	(13)= (11)+ (12)	(14)	(15)= (13)+ (14)	
1	15.49.06	0	29	263	0	260	11	321	884	4355	4286	69	5239	0	5239
2	16.03.40	0	61	288	0	264	11	317	941	4684	4601	83	5625	14	5639
3	16.02.49	0	60	294	0	279	16	356	1005	4805	4739	66	5810	0	5810
4	23.55.04	0	63	295	0	280	16	169	823	4851	4906	-55	5674	37	5711
5	00.01.46	0	63	296	0	274	15	161	809	4864	4884	-20	5673	38	5711
6	15.02.40	0	158	144	0	253	15	176	746	5254	5294	-40	6000	70	6070
7	15.03.49	0	153	146	0	251	12	287	849	4885	5068	-183	5734	16	5750
8	15.20.55	0	162	150	0	258	18	323	911	5066	4966	100	5977	0	5977
9	14.27.33	0	156	258	0	235	18	358	1025	4870	4675	195	5895	5	5900
10	15.12.54	0	156	258	0	235	18	358	1025	5001	4927	74	6026	6	6032
11	00.01.05	0	140	265	0	255	18	314	992	4182	4386	-204	5174	1	5175
12	23.52.04	0	56	262	0	255	18	327	918	4336	4103	233	5254	28	5282
13	15.16.48	0	128	183	0	253	17	356	937	4926	4729	197	5863	0	5863
14	23.30.09	0	139	266	0	253	16	325	999	4601	4475	126	5600	2	5602
15	15.29.56	0	138	286	0	255	16	330	1025	4765	4808	-43	5790	0	5790
16	23.02.38	0	139	292	0	293	16	326	1066	4458	4391	67	5524	0	5524
17	15.51.19	0	137	293	0	255	16	357	1058	4806	4860	-54	5864	0	5864
18	15.13.39	0	137	266	0	264	16	357	1040	4660	4608	52	5700	0	5700
19	23.25.19	0	139	146	0	252	16	320	873	4753	4827	-74	5626	25	5651
20	11.58.34	0	144	299	0	118	16	344	921	4621	4631	-10	5542	0	5542
21	15.28.18	0	66	263	0	0	16	331	676	4946	4953	-7	5622	38	5660
22	15.19.08	0	66	302	0	-3	16	342	723	4902	4949	-47	5625	0	5625
23	16.05.07	0	65	263	0	-2	16	335	677	4792	4745	47	5469	12	5481
24	15.06.29	0	114	297	0	-5	16	365	787	5211	5147	64	5998	0	5998
25	13.57.40	0	129	300	0	0	16	365	810	4905	4695	210	5715	0	5715
26	22.51.55	0	144	266	0	254	16	322	1002	4738	4723	15	5740	0	5740
27	22.55.23	0	134	173	0	257	16	336	916	5038	4935	103	5954	3	5957
28	00.00.10	0	135	172	0	255	16	344	922	4812	4849	-37	5734	14	5748
29	15.04.29	0	139	295	0	252	12	345	1043	4978	4810	168	6021	3	6024
30	15.29.40	0	164	295	0	298	16	349	1122	5138	5200	-62	6260	0	6260



## SOURCEWISE SCHEDULED DRAWL FROM NORTHERN GRID AS WELL AS AVAILABILITY WITHIN DELHI FOR JUNE 2016

### A) AVAILABILITY FROM GENCO AND PRAGATI STNs. (all fig in MUs)

A (i) RPH	0.000
(ii) GT+STG	85.871
(iii) PRAGATI	185.241
(iv) RITHALA	0.000
(v) BAWANA CCGT	152.845
(vi) Timarpur ó Okhla	14.348
TOTAL	438.305
B) AVAILABILITY FROM BTPS	221.101
C) AUXILIARY CONSUMPTION OF GENERATING STNs. EXCLUDING BTPS	16.169
D) NET GENERATION AVAILABLE WITHIN DELHI(A+B-C)	<b>643.237</b>

### B) SOURCE WISE SCHEDULED DRAWL FROM THE NORTHERN GRID

NAME OF THE STATION	AVAILABILITY AT POWER PLANT	AVAILABILITY AT DELHI PERIPHERY	ALLOCATION MADE BY NRLDC AT POWER PLANT	ALLOCATION MADE BY NRLDC AT DELHI PERIPHERY
B/SUIL	7.257	7.079	5.414	5.281
SALAL	53.551	52.229	40.418	39.420
SASAN	276.405	269.596	268.398	261.781
TANKAPUR	3.382	3.299	2.598	2.534
CHAMERA	23.197	22.629	17.561	17.131
CHAMERA -II	28.048	27.357	20.922	20.407
CHAMERA -III	19.943	19.453	14.879	14.513
DHAULIGANGA	19.040	18.575	14.204	13.857
SEWA -2	3.448	3.362	2.572	2.508
URI	37.495	36.570	27.971	27.281
URI-II	22.210	21.663	16.566	16.158
KOLDAM	0.000	0.000	0.000	0.000
KOTESHWAR	8.559	8.349	8.559	8.349
PARBATI3	12.600	12.293	9.400	9.171
RAMPUR	0.000	0.000	0.000	0.000
MUNDRA_UMPP	0.000	0.000	0.000	0.000
ANTA (GAS)	6.681	6.504	2.393	2.330
ANTA (RLNG)	21.839	21.308	0.000	0.000
ANTA (LIQUID)	0.000	0.000	0.000	0.000
DADRI (GAS)	20.785	20.268	12.126	11.827
DADRI (RLNG)	39.976	38.996	0.559	0.544
DADRI (LIQUID)	0.000	0.000	0.000	0.000
AURAIYA (GAS)	4.589	4.482	3.509	3.427
AURAIYA (RLNG)	44.377	43.276	0.000	0.000
AURAIYA (LIQUID)	0.000	0.000	0.000	0.000
SINGRAULI	99.086	96.634	92.126	89.847
RIHAND -I	31.982	31.195	25.811	25.180
RIHAND -II	84.692	82.605	69.652	67.940
RIHAND -III	76.273	74.343	65.428	63.772
UNCHAHAHAR-I	14.369	14.014	10.503	10.244
UNCHAHAHAR-II	32.223	31.428	23.712	23.128
UNCHAHAHAR-III	19.886	19.396	14.506	14.149
DADRI (TH)	521.640	508.773	229.084	223.356
DADRI (TH) STAGE-II	516.256	503.524	427.336	416.804
NAPP	19.656	19.170	19.656	19.170
RAPP 'B'	0.000	0.000	0.000	0.000
RAPP 'C'	37.068	36.153	37.068	36.153
NATHPA JHAKRI	108.703	106.023	81.091	79.091
DULASTI	31.111	30.337	23.513	22.928
TEHRI	10.847	10.583	10.800	10.537
JHAJJAR	473.100	461.428	320.483	312.596
KHELGAON	32.780	31.972	24.120	23.525
KHELGAON-II	104.903	102.312	82.035	80.012

NAME OF THE STATION	AVAILABILITY AT POWER PLANT	AVAILABILITY AT DELHI PERIPHERY	ALLOCATION MADE BY NRLDC AT POWER PLANT	ALLOCATION MADE BY NRLDC AT DELHI PERIPHERY
FARAKA	14.569	14.210	10.236	9.984
TALA	11.238	10.962	11.238	10.962
TALCHER	0.000	0.000	0.000	0.000
DVC	216.507	214.883	214.883	209.604
UTTAR PRADESH	7.790	7.650	7.650	7.462
TRIPUA	0.000	0.000	0.000	0.000
MEGHALAYA	1.684	1.674	1.674	1.634
UTTRANCHAL	0.616	0.606	0.606	0.593
DVC CTPS (BYPL)	0.000	0.000	0.000	0.000
DVC CTPS (NDPL)	0.000	0.000	0.000	0.000
METHON POWER(NDPL)LT-06	166.694	165.021	165.021	160.910
DVC MEJIA (LT-08)(BYPL)	60.900	60.440	60.440	58.926
URS	0.059	0.057	0.059	0.057
JAMMU & KASHMIR	288.772	286.442	286.442	279.370
HIMACHAL PRADESH	1.157	1.137	1.137	1.111
PUNJAB	0.000	0.000	0.000	0.000
MADHYA PRADESH	4.338	4.262	4.262	4.159
CHATTISHGARH	33.815	33.060	33.060	32.251
DVC LT-9	0.000	0.000	0.000	0.000
HARYANA (LT-05)	21.740	21.559	21.559	21.013
RAJASTHAN	36.974	36.421	36.421	35.551
ORISSA	22.691	22.460	22.460	21.935
RAJASTHAN(SOLAR) BRPL-LT36	3.994	3.932	3.932	3.835
RAJASTHAN(SOLAR) BYPL - LT-35	3.936	3.875	3.875	3.779
RAJASTHAN(SOLAR) TPDDL LT-31	3.888	3.827	3.827	3.733
TO JAMMU & KASHMIR	0.000	0.000	0.000	0.000
TO KARNATAKA	0.000	0.000	0.000	0.000
TO UTTAR PRADESH	-10.066	-10.302	-10.302	-10.557
TO MEGHALAYA	0.000	0.000	0.000	0.000
TO PUNJAB	-0.877	-0.883	-0.883	-0.904
TO CHATTISHGARH	0.000	0.000	0.000	0.000
TO UTTRANCHAL	0.000	0.000	0.000	0.000
TO KERALA	0.000	0.000	0.000	0.000
TO RAJASTHAN	0.000	0.000	0.000	0.000
TO WEST BENGAL	0.000	0.000	0.000	0.000
BTPS TO MP	0.000	0.000	0.000	0.000
TO HIMACHAL PRADESH	0.000	0.000	0.000	0.000
TO ORISSA	0.000	0.000	0.000	0.000
POWER EXCHANGE(IEX)	125.034	121.944	125.034	121.944
TO POWER EXCHANGE (IEX)	-53.131	-54.478	-53.131	-54.478
POWER EXCHANGE(PX)	0.000	0.000	0.000	0.000
TO POWER EXCHANGE (PX)	0.000	0.000	0.000	0.000
TO SHARE PROJECT (HARYANA)	-15.015	-15.389	-15.015	-15.389
TO SHARE PROJECT (PUNJAB)	-14.121	-14.474	-14.121	-14.474
<b>TOTAL</b>	<b>3801.143</b>	<b>3716.074</b>	<b>2945.336</b>	<b>2867.963</b>

### C) AGENCY WISE BREAKUP OF ENERGY SCHEDULED DRAWL FROM THE GRID

NAME OF THE STATION	AVAILABILITY AT POWER PLANT	AVAILABILITY AT DELHI PERIPHERY	ALLOCATION MADE BY NRLDC AT POWER PLANT	ALLOCATION MADE BY NRLDC AT DELHI PERIPHERY
NTPC - NR	1534.654	1496.745	976.746	952.549
NTPC - ER	152.251	148.494	116.390	113.522
NHPC	261.282	254.846	196.018	191.188
NPC	56.724	55.323	56.724	55.323
SASAN	276.405	269.596	268.398	261.781
KOTESHWAR	8.559	8.349	8.559	8.349
MUNDRA_UMPP	0.000	0.000	0.000	0.000
NATHPA JHAKRI	108.703	106.023	81.091	79.091
TEHRI	10.847	10.583	10.800	10.537
TALA	11.238	10.962	11.238	10.962
JHAJJAR	473.100	461.428	320.483	312.596
TALCHER	0.000	0.000	0.000	0.000

NAME OF THE STATION	AVAILABILITY AT POWER PLANT	AVAILABILITY AT DELHI PERIPHERY	ALLOCATION MADE BY NRLDC AT POWER PLANT	ALLOCATION MADE BY NRLDC AT DELHI PERIPHERY
RAJASTHAN SOLAR(BRPL)T-36	3.994	3.932	3.932	3.835
RAJASTHAN SOLAR(BYPL)T-35	3.936	3.875	3.875	3.779
RAJASTHAN SOLAR(TPDDL)T-31	3.888	3.827	3.827	3.733
DVC	216.507	214.883	214.883	209.604
UTTAR PRADESH	7.790	7.650	7.650	7.462
TRIPURA	0.000	0.000	0.000	0.000
MEGHALAYA	1.684	1.674	1.674	1.634
UTTRANCHAL	0.616	0.606	0.606	0.593
DVC CTPS (BYPL)	0.000	0.000	0.000	0.000
DVC CTPS (NDPL)	0.000	0.000	0.000	0.000
METHON POWER (NDPL)-LT-06	166.694	165.021	165.021	160.910
DVC MEJIA (LT-08)(BYPL)	60.900	60.440	60.440	58.926
URS	0.059	0.057	0.059	0.057
JAMMU & KASHMIR	288.772	286.442	286.442	279.370
HIMACHAL PRADESH	1.157	1.137	1.137	1.111
PUNJAB	0.000	0.000	0.000	0.000
MADHYA PRADESH	4.338	4.262	4.262	4.159
CHATTISHGARH	33.815	33.060	33.060	32.251
DVC (FOR NDPL) LT-09	0.000	0.000	0.000	0.000
HARYANA (LT -05)	21.740	21.559	21.559	21.013
RAJASTHAN	36.974	36.421	36.421	35.551
ORISSA	22.691	22.460	22.460	21.935
POWER EXCHANGE(IEX)	125.034	121.944	125.034	121.944
POWER EXCHANGE(PX)	0.000	0.000	0.000	0.000
<b>TOTAL</b>	<b>3894.353</b>	<b>3811.599</b>	<b>3038.788</b>	<b>2963.765</b>

**D) AGENCY WISE BREAKUP OF ENERGY SCHEDULED BY NRLDC FOR EXPORT TO OTHER UTILITIES FROM DTL**

NAME OF THE STATION	AVAILABILITY AT POWER PLANT	AVAILABILITY AT PERIPHERY	ALLOCATION MADE BY NRLDC AT POWER PLANT	ALLOCATION MADE BY NRLDC AT POWER PERIPHERY
TO JAMMU & KASHMIR	0.000	0.000	0.000	0.000
TO KARNATAKA	0.000	0.000	0.000	0.000
TO UTTAR PRADESH	-10.066	-10.302	-10.302	-10.557
TO MEGHALAYA	0.000	0.000	0.000	0.000
TO CHATTISHGARH	0.000	0.000	0.000	0.000
TO PUNJAB	-0.877	-0.883	-0.883	-0.904
TO UTTRANCHAL	0.000	0.000	0.000	0.000
TO KERALA	0.000	0.000	0.000	0.000
TO RAJASTHAN	0.000	0.000	0.000	0.000
TO WEST BENGAL	0.000	0.000	0.000	0.000
BTPS TO MP	0.000	0.000	0.000	0.000
TO HIMACHAL PRADESH	0.000	0.000	0.000	0.000
TO ORISSA	0.000	0.000	0.000	0.000
TO POWER EXCHANGE (IEX)	-53.131	-54.478	-53.131	-54.478
TO POWER EXCHANGE (PX)	0.000	0.000	0.000	0.000
TO SHARE PROJECT (HARYANA)	-15.015	-15.389	-15.015	-15.389
TO SHARE PROJECT (PUNJAB)	-14.121	-14.474	-14.121	-14.474
<b>TOTAL</b>	<b>-93.210</b>	<b>-95.526</b>	<b>-93.452</b>	<b>-95.802</b>
<b>TOTAL SCHEDULED DRAWAL FROM THE GRID</b>	<b>3801.143</b>	<b>3716.074</b>	<b>2945.336</b>	<b>2867.963</b>

TOTAL CONSUMPTION INCLUDING AUX. OF GENERATING STNs. EXCLUDING BTPS		3506.578
NET CONSUMPTION		<b>3490.409</b>
AVAILABILITY WITHIN DELHI		643.237
ACTUAL DRAWAL FROM THE GRID		2847.172
OVER DRAWAL(+)/UNDER DRAWAL(-) FROM THE GRID ON THE BASIS OF SCHEDULED ALLOCATION MADE BY NRLDC TO DELHI AT PERIPHERY		-20.791
LOAD SHEDDING		<b>7.075</b>
UNRESTRICTED DEMAND (GROSS)		3513.653
UNRESTRICTED DEMAND (NET)		3497.484
MAX. NET CONSUMPTION		130.580 ON 30.06.2016
MAX. LOAD SHEDDING		1061MW ON 10.06.2016 AT 17.07HRS.
<b>PEAK LOAD</b>	Peak Demand during the month	SHEDDING AT PEAK TIME
DAY PEAK	6260MW AT 15.29.40HRS ON 30.06.2016	0 MW
EVENING PEAK	6076MW AT 23.00HRS ON 30.06.2016	9 MW
P.L.F. OF GENCO AND PRAGATI STNs.	RPH	0.00%
	GT	44.17%
	PRAGATI	77.96%
	RITHALA	0.00%
	BAWANA	15.48%
	Timarpur Okhla	124.55%

DATE	No. of Under Freq. Relay Operated	Shedding due to under frequency relay operation in MUs					Shedding due to Grid Restrictions (Over drawal / low freq.)				
		BSES		NDPL	NDMC	TOTAL	BSES		NDPL	NDMC	MES
		BYPL	BRPL				BYPL	BRPL			
1	2	3	4	5	6	7=3 to 6	8	9	10	11	12
01.Jun.16	0	0.000	0.000	0.000	0.000	0.000	0.000	0.000	0.000	0.000	0.000
02.Jun.16	0	0.000	0.000	0.000	0.000	0.000	0.000	0.000	0.000	0.000	0.000
03.Jun.16	0	0.000	0.000	0.000	0.000	0.000	0.000	0.000	0.000	0.000	0.000
04.Jun.16	0	0.000	0.000	0.000	0.000	0.000	0.000	0.000	0.000	0.000	0.000
05.Jun.16	0	0.000	0.000	0.000	0.000	0.000	0.000	0.000	0.000	0.000	0.000
06.Jun.16	0	0.000	0.000	0.000	0.000	0.000	0.000	0.000	0.000	0.000	0.000
07.Jun.16	0	0.000	0.000	0.000	0.000	0.000	0.000	0.000	0.000	0.000	0.000
08.Jun.16	0	0.000	0.000	0.000	0.000	0.000	0.000	0.000	0.000	0.000	0.000
09.Jun.16	0	0.000	0.000	0.000	0.000	0.000	0.000	0.000	0.000	0.000	0.000
10.Jun.16	0	0.000	0.000	0.000	0.000	0.000	0.000	0.000	0.000	0.000	0.000
11.Jun.16	0	0.000	0.000	0.000	0.000	0.000	0.000	0.000	0.000	0.000	0.000
12.Jun.16	0	0.000	0.000	0.000	0.000	0.000	0.000	0.000	0.000	0.000	0.000
13.Jun.16	0	0.000	0.000	0.000	0.000	0.000	0.000	0.147	0.000	0.000	0.000
14.Jun.16	0	0.000	0.000	0.000	0.000	0.000	0.000	0.029	0.000	0.000	0.000
15.Jun.16	0	0.000	0.000	0.000	0.000	0.000	0.000	0.015	0.000	0.000	0.000
16.Jun.16	0	0.000	0.000	0.000	0.000	0.000	0.000	0.009	0.000	0.000	0.000
17.Jun.16	0	0.000	0.000	0.000	0.000	0.000	0.000	0.000	0.000	0.000	0.000
18.Jun.16	0	0.000	0.000	0.000	0.000	0.000	0.000	0.000	0.000	0.000	0.000
19.Jun.16	0	0.000	0.000	0.000	0.000	0.000	0.000	0.000	0.000	0.000	0.000
20.Jun.16	0	0.000	0.000	0.000	0.000	0.000	0.000	0.000	0.000	0.000	0.000
21.Jun.16	0	0.000	0.000	0.000	0.000	0.000	0.000	0.000	0.000	0.000	0.000
22.Jun.16	0	0.000	0.000	0.000	0.000	0.000	0.000	0.000	0.000	0.000	0.000
23.Jun.16	0	0.000	0.000	0.000	0.000	0.000	0.000	0.000	0.000	0.000	0.000
24.Jun.16	0	0.000	0.000	0.000	0.000	0.000	0.000	0.000	0.000	0.000	0.000
25.Jun.16	0	0.000	0.000	0.000	0.000	0.000	0.000	0.019	0.000	0.000	0.000
26.Jun.16	0	0.000	0.000	0.000	0.000	0.000	0.000	0.000	0.000	0.000	0.000
27.Jun.16	0	0.000	0.000	0.000	0.000	0.000	0.000	0.039	0.000	0.000	0.000
28.Jun.16	0	0.000	0.000	0.000	0.000	0.000	0.000	0.075	0.000	0.000	0.000
29.Jun.16	0	0.000	0.000	0.000	0.000	0.000	0.025	0.237	0.084	0.000	0.000
30.Jun.16	0	0.000	0.000	0.000	0.000	0.000	0.000	0.000	0.000	0.000	0.000
<b>TOTAL</b>	<b>0</b>	<b>0.000</b>	<b>0.000</b>	<b>0.000</b>	<b>0.000</b>	<b>0.000</b>	<b>0.025</b>	<b>0.570</b>	<b>0.084</b>	<b>0.000</b>	<b>0.000</b>

Date	Shedding due to Transmission/Grid Constraints in Central Sector Stations / TTC / ATC VOILATION				DUE TO NEW GRID CODE REGULATION DEVIATION			Shedding due to Transmission/Grid Constraints in Central sector stations				Total	Total shedding due to grid restrictions
	BSES		NDPL	NDMC	BSES		TPDDL	BSES	TPDDL	NDMC			
	BYPL	BRPL			BYPL	BRPL							
	13	14	15	16	17	18	19	20	21	22	23	24=8 to 23	25=7+24
01.Jun.16	0.000	0.000	0.000	0.000	0.000	0.000	0.000	0.000	0.000	0.000	0.000	0.000	0.000
02.Jun.16	0.000	0.000	0.000	0.000	0.000	0.000	0.000	0.000	0.000	0.000	0.000	0.000	0.000
03.Jun.16	0.000	0.000	0.000	0.000	0.000	0.000	0.000	0.000	0.000	0.000	0.000	0.000	0.000
04.Jun.16	0.000	0.000	0.000	0.000	0.000	0.000	0.000	0.000	0.000	0.000	0.000	0.000	0.000
05.Jun.16	0.000	0.000	0.000	0.000	0.000	0.000	0.000	0.000	0.000	0.000	0.000	0.000	0.000
06.Jun.16	0.000	0.000	0.000	0.000	0.000	0.000	0.000	0.000	0.000	0.000	0.000	0.000	0.000
07.Jun.16	0.000	0.000	0.000	0.000	0.000	0.000	0.000	0.000	0.000	0.000	0.000	0.000	0.000
08.Jun.16	0.000	0.000	0.000	0.000	0.000	0.000	0.000	0.000	0.000	0.000	0.000	0.000	0.000
09.Jun.16	0.000	0.000	0.000	0.000	0.000	0.000	0.000	0.000	0.000	0.000	0.000	0.000	0.000
10.Jun.16	0.000	0.000	0.000	0.000	0.000	0.000	0.000	0.000	0.000	0.000	0.000	0.000	0.000
11.Jun.16	0.000	0.000	0.000	0.000	0.000	0.000	0.000	0.000	0.000	0.000	0.000	0.000	0.000
12.Jun.16	0.000	0.000	0.000	0.000	0.000	0.000	0.000	0.000	0.000	0.000	0.000	0.000	0.000
13.Jun.16	0.000	0.000	0.000	0.000	0.000	0.000	0.000	0.000	0.000	0.000	0.000	0.147	0.147
14.Jun.16	0.000	0.000	0.000	0.000	0.000	0.000	0.000	0.000	0.000	0.000	0.000	0.029	0.029
15.Jun.16	0.000	0.000	0.000	0.000	0.000	0.000	0.000	0.000	0.000	0.000	0.000	0.015	0.015
16.Jun.16	0.000	0.000	0.000	0.000	0.000	0.000	0.000	0.000	0.000	0.000	0.000	0.009	0.009
17.Jun.16	0.000	0.000	0.000	0.000	0.000	0.000	0.000	0.000	0.000	0.000	0.000	0.000	0.000
18.Jun.16	0.000	0.000	0.000	0.000	0.000	0.000	0.000	0.000	0.000	0.000	0.000	0.000	0.000
19.Jun.16	0.000	0.000	0.000	0.000	0.000	0.000	0.000	0.000	0.000	0.000	0.000	0.000	0.000
20.Jun.16	0.000	0.000	0.000	0.000	0.000	0.000	0.000	0.000	0.000	0.000	0.000	0.000	0.000
21.Jun.16	0.000	0.000	0.000	0.000	0.000	0.000	0.000	0.000	0.000	0.000	0.000	0.000	0.000
22.Jun.16	0.000	0.073	0.000	0.000	0.000	0.000	0.000	0.000	0.000	0.000	0.000	0.073	0.073
23.Jun.16	0.000	0.000	0.000	0.000	0.000	0.000	0.000	0.000	0.000	0.000	0.000	0.000	0.000
24.Jun.16	0.000	0.000	0.000	0.000	0.000	0.000	0.000	0.000	0.000	0.000	0.000	0.000	0.000
25.Jun.16	0.000	0.000	0.000	0.000	0.000	0.000	0.000	0.000	0.000	0.000	0.000	0.019	0.019
26.Jun.16	0.000	0.000	0.000	0.000	0.000	0.000	0.000	0.000	0.000	0.000	0.000	0.000	0.000
27.Jun.16	0.000	0.000	0.000	0.000	0.000	0.000	0.000	0.000	0.000	0.000	0.000	0.039	0.039
28.Jun.16	0.000	0.000	0.000	0.000	0.000	0.000	0.000	0.000	0.000	0.000	0.000	0.075	0.075
29.Jun.16	0.000	0.000	0.000	0.000	0.000	0.000	0.000	0.000	0.000	0.000	0.000	0.346	0.346
30.Jun.16	0.000	0.000	0.000	0.000	0.000	0.000	0.000	0.000	0.000	0.000	0.000	0.000	0.000
<b>TOTAL</b>	<b>0.000</b>	<b>0.073</b>	<b>0.000</b>	<b>0.000</b>	<b>0.000</b>	<b>0.000</b>	<b>0.000</b>	<b>0.000</b>	<b>0.000</b>	<b>0.000</b>	<b>0.000</b>	<b>0.752</b>	<b>0.752</b>

Date	DUE TO T&D CONSTRAINTS IN DELHI SYSTEM								
	DTL					DISCOMS			
	BSES		NDPL	NDMC	MES	BSES		NDPL	NDMC
	BYPL	BRPL				BYPL	BRPL		
26	27	28	29	30	31	32	33	34	
01.Jun.16	0.000	0.000	0.000	0.000	0.000	0.000	0.039	0.004	0.000
02.Jun.16	0.006	0.000	0.001	0.000	0.000	0.000	0.045	0.017	0.000
03.Jun.16	0.000	0.000	0.000	0.000	0.000	0.000	0.038	0.001	0.000
04.Jun.16	0.000	0.403	0.000	0.000	0.000	0.005	0.206	0.000	0.000
05.Jun.16	0.000	0.004	0.000	0.000	0.000	0.000	0.141	0.007	0.000
06.Jun.16	0.000	0.204	0.000	0.000	0.000	0.001	0.152	0.005	0.000
07.Jun.16	0.000	0.021	0.000	0.000	0.000	0.040	0.071	0.000	0.000
08.Jun.16	0.000	0.000	0.000	0.000	0.000	0.037	0.096	0.000	0.000
09.Jun.16	0.000	0.000	0.000	0.000	0.000	0.026	0.088	0.005	0.000
10.Jun.16	0.306	0.234	0.123	0.000	0.000	0.000	0.022	0.026	0.000
11.Jun.16	0.000	0.019	0.000	0.000	0.000	0.003	0.063	0.007	0.000
12.Jun.16	0.000	0.139	0.000	0.000	0.000	0.000	0.012	0.003	0.000
13.Jun.16	0.170	0.007	0.019	0.008	0.000	0.002	0.041	0.002	0.000
14.Jun.16	0.000	0.000	0.000	0.000	0.000	0.000	0.056	0.000	0.000
15.Jun.16	0.000	0.000	0.039	0.000	0.000	0.005	0.089	0.011	0.000
16.Jun.16	0.000	0.000	0.007	0.000	0.000	0.000	0.110	0.004	0.000
17.Jun.16	0.027	0.000	0.000	0.000	0.000	0.008	0.018	0.000	0.000
18.Jun.16	0.015	0.060	0.000	0.000	0.000	0.031	0.066	0.002	0.000
19.Jun.16	0.003	0.005	0.000	0.000	0.000	0.008	0.084	0.000	0.000
20.Jun.16	0.009	0.006	0.000	0.000	0.000	0.001	0.028	0.013	0.000
21.Jun.16	0.017	0.000	0.000	0.000	0.000	0.014	0.163	0.000	0.000
22.Jun.16	0.000	0.037	0.000	0.000	0.000	0.016	0.002	0.013	0.000
23.Jun.16	0.112	0.000	0.000	0.000	0.000	0.002	0.058	0.001	0.000
24.Jun.16	0.001	0.176	0.003	0.000	0.000	0.008	0.029	0.005	0.000
25.Jun.16	0.008	0.004	0.000	0.000	0.000	0.013	0.081	0.001	0.000
26.Jun.16	0.000	0.000	0.000	0.000	0.000	0.000	0.051	0.000	0.000
27.Jun.16	0.000	0.000	0.002	0.000	0.000	0.003	0.012	0.002	0.000
28.Jun.16	0.066	0.112	0.012	0.000	0.000	0.008	0.168	0.050	0.000
29.Jun.16	0.048	0.004	0.012	0.000	0.000	0.052	0.035	0.000	0.000
30.Jun.16	0.000	0.046	0.000	0.000	0.000	0.006	0.071	0.006	0.000
<b>TOTAL</b>	<b>0.788</b>	<b>1.481</b>	<b>0.218</b>	<b>0.008</b>	<b>0.000</b>	<b>0.289</b>	<b>2.135</b>	<b>0.185</b>	<b>0.000</b>

ALL FIGURES IN MUS

DATE	OTHER AGENCIES LIKE GENCO, BBMB, BTPS ETC.				THEFT PRONE SHEDDING			TOTAL SHEDDING DUE TO T&D CONSTS. & THEFT PRONE	GRAND TOTAL
	BSES		NDPL	NDMC	BSES		NDPL		
	BYPL	BRPL			BYPL	BRPL			
1	35	36	37	38	39	40	41	42= 26 to 41	43 = 25 + 42
01.Jun.16	0.000	0.000	0.000	0.000	0.000	0.000	0.000	0.043	0.043
02.Jun.16	0.000	0.000	0.000	0.000	0.000	0.000	0.000	0.069	0.069
03.Jun.16	0.000	0.000	0.000	0.000	0.000	0.000	0.000	0.039	0.039
04.Jun.16	0.000	0.000	0.000	0.000	0.000	0.000	0.000	0.614	0.614
05.Jun.16	0.000	0.000	0.000	0.000	0.000	0.000	0.000	0.152	0.152
06.Jun.16	0.000	0.000	0.000	0.000	0.000	0.000	0.000	0.362	0.362
07.Jun.16	0.000	0.000	0.000	0.000	0.000	0.000	0.000	0.132	0.132
08.Jun.16	0.000	0.000	0.000	0.000	0.000	0.000	0.000	0.133	0.133
09.Jun.16	0.165	1.047	0.007	0.000	0.000	0.000	0.000	1.338	1.338
10.Jun.16	0.000	0.000	0.000	0.000	0.000	0.000	0.000	0.711	0.711
11.Jun.16	0.000	0.000	0.000	0.000	0.000	0.000	0.000	0.092	0.092
12.Jun.16	0.000	0.000	0.000	0.000	0.000	0.000	0.000	0.154	0.154
13.Jun.16	0.000	0.000	0.000	0.000	0.000	0.000	0.000	0.249	0.396
14.Jun.16	0.000	0.000	0.000	0.000	0.000	0.000	0.000	0.056	0.085
15.Jun.16	0.000	0.000	0.000	0.000	0.000	0.000	0.000	0.144	0.159
16.Jun.16	0.000	0.000	0.000	0.000	0.000	0.000	0.000	0.121	0.130
17.Jun.16	0.000	0.000	0.000	0.000	0.000	0.000	0.000	0.053	0.053
18.Jun.16	0.000	0.000	0.000	0.000	0.000	0.000	0.000	0.174	0.174
19.Jun.16	0.000	0.000	0.000	0.000	0.000	0.000	0.000	0.100	0.100
20.Jun.16	0.000	0.000	0.000	0.000	0.000	0.000	0.000	0.057	0.057
21.Jun.16	0.000	0.000	0.000	0.000	0.000	0.000	0.000	0.194	0.194
22.Jun.16	0.000	0.000	0.000	0.000	0.000	0.000	0.000	0.068	0.141
23.Jun.16	0.000	0.000	0.000	0.000	0.000	0.000	0.000	0.173	0.173
24.Jun.16	0.000	0.000	0.000	0.000	0.000	0.000	0.000	0.222	0.222
25.Jun.16	0.000	0.000	0.000	0.000	0.000	0.000	0.000	0.107	0.126
26.Jun.16	0.000	0.000	0.000	0.000	0.000	0.000	0.000	0.051	0.051
27.Jun.16	0.000	0.000	0.000	0.000	0.000	0.000	0.000	0.019	0.058
28.Jun.16	0.000	0.000	0.000	0.000	0.000	0.000	0.000	0.416	0.491
29.Jun.16	0.000	0.000	0.000	0.000	0.000	0.000	0.000	0.151	0.497
30.Jun.16	0.000	0.000	0.000	0.000	0.000	0.000	0.000	0.129	0.129
<b>TOTAL</b>	<b>0.165</b>	<b>1.047</b>	<b>0.007</b>	<b>0.000</b>	<b>0.000</b>	<b>0.000</b>	<b>0.000</b>	<b>6.323</b>	<b>7.075</b>

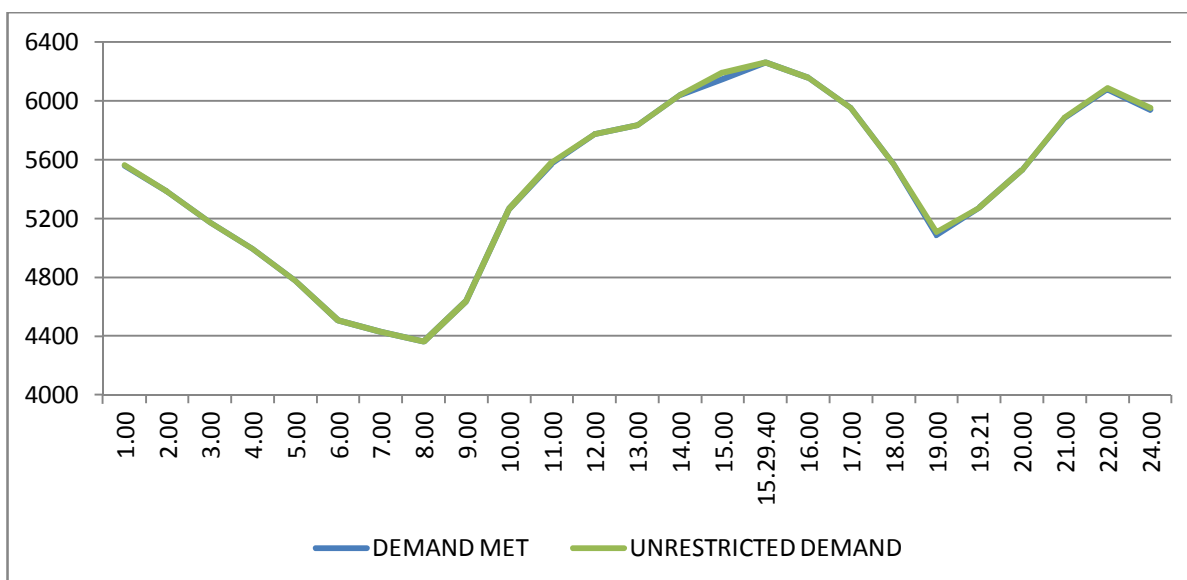


DATE	(NET CONS.)	MAXI. DEMAND MET DURING THE DAY	TIME OF OCCURRENCE OF MAX DEMAND	SHEDDING AT THIS TIME	UN-RESTRICTED DEMAND	MAXIMUM UN-RESTRICTED DEMAND DURING THE DAY	TIME OF MAX. UN-REST. DEMAND	DEMAND AT THAT TIME	SHEDDING AT THAT TIME
	In Mus.	IN MW	IN HRS.	IN MW	IN MW	IN MW	HRS.	IN MW	IN MW
<b>1</b>	<b>32</b>	<b>33</b>	<b>34</b>	<b>35</b>	<b>36=33+35</b>	<b>37=39+40</b>	<b>38</b>	<b>39</b>	<b>40</b>
01.Jun.16	103.725	5239	15:49:06	0	5239	5239	15:49:06	5239	0
02.Jun.16	115.026	5625	16:03:40	14	5639	5639	16:03:40	5625	14
03.Jun.16	119.166	5810	16:02:49	0	5810	5810	16:02:49	5810	0
04.Jun.16	119.818	5674	23:55:04	37	5711	5721	23:00	5659	62
05.Jun.16	119.641	5673	00:01:46	38	5711	5711	00:01:46	5673	38
06.Jun.16	121.857	6000	15:02:40	70	6070	6070	15:02:40	6000	70
07.Jun.16	117.947	5734	15:03:49	16	5750	5750	15:03:49	5734	16
08.Jun.16	118.555	5977	15:20:55	0	5977	5977	15:20:55	5977	0
09.Jun.16	119.045	5895	14:27:33	5	5900	5900	14:27:33	5895	5
10.Jun.16	111.863	6063	15:12:54	6	6069	6069	15:12:54	6063	6
11.Jun.16	103.529	5174	00:01:05	1	5175	5175	00:01:05	5174	1
12.Jun.16	100.704	5254	23:52:04	28	5282	5282	23:52:04	5254	28
13.Jun.16	114.074	5872	15:16:48	0	5872	5891	15:30	5657	234
14.Jun.16	109.477	5600	23:30:09	2	5602	5602	23:30:09	5600	2
15.Jun.16	116.585	5790	15:29:56	0	5790	5790	15:29:56	5790	0
16.Jun.16	114.658	5524	23:02:38	0	5524	5524	23:02:38	5524	0
17.Jun.16	114.867	5864	15:51:19	0	5864	5864	15:51:19	5864	0
18.Jun.16	119.781	5700	15:13:39	0	5700	5700	15:13:39	5700	0
19.Jun.16	114.118	5626	23:25:19	25	5651	5651	23:25:19	5626	25
20.Jun.16	119.239	5542	11:58:34	0	5542	5542	11:58:34	5542	0
21.Jun.16	112.214	5622	15:28:18	38	5660	5660	15:28:18	5622	38
22.Jun.16	114.343	5625	15:19:08	0	5625	5625	15:19:08	5625	0
23.Jun.16	114.813	5469	16:05:07	12	5481	5481	16:05:07	5469	12
24.Jun.16	120.607	5998	15:06:29	0	5998	5998	15:06:29	5998	0
25.Jun.16	124.613	5715	13:57:40	0	5715	5715	13:57:40	5715	0
26.Jun.16	117.545	5740	22:51:55	0	5740	5740	22:51:55	5740	0
27.Jun.16	124.563	5954	22:53:23	3	5957	5957	22:53:23	5954	3
28.Jun.16	115.359	5734	00:00:10	14	5748	5748	00:00:10	5734	14
29.Jun.16	122.097	6021	15:04:29	3	6024	6024	15:04:29	6021	3
30.Jun.16	130.580	6260	15:29:40	0	6260	6260	15:29:40	6260	0
<b>TOTAL</b>	<b>3490.409</b>	<b>6260</b> <b>30.06.16</b>	<b>15:29:40</b>	<b>0</b>	<b>6260</b> <b>30.06.16</b>	<b>6260</b>	<b>15:29:40</b>	<b>6260</b>	<b>0</b>

### LOAD PATTERN OF DELHI ON THE DAY OF PEAK DEMAND MET DURING JUNE 2016 ON 30.06.2016- 6260MW AT 15.29.40HRS.

All figures in MW

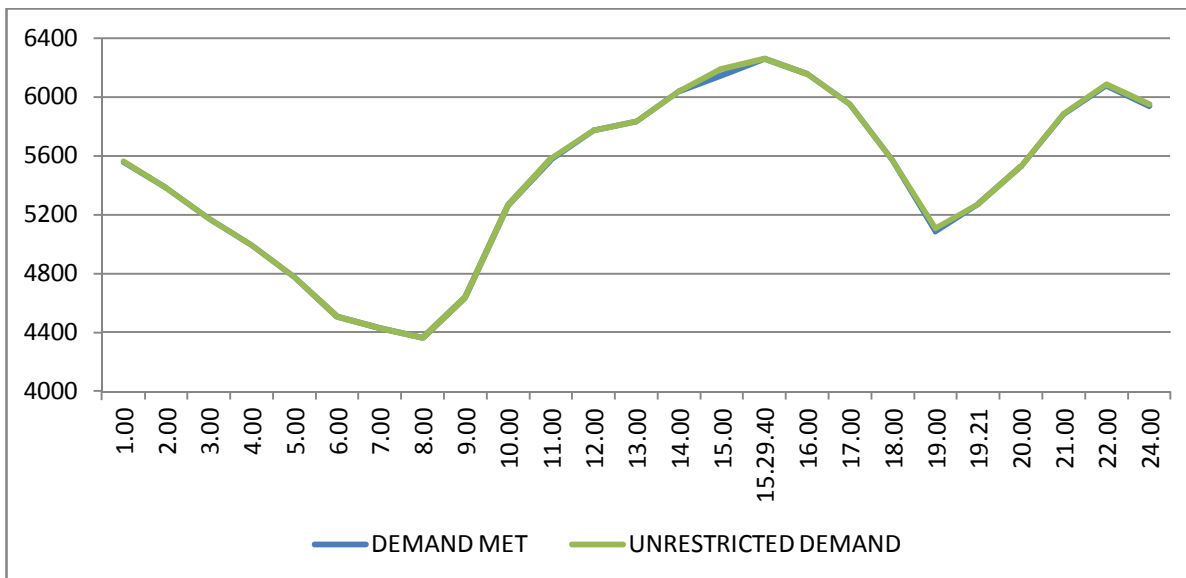
Hrs.	Demand	Load Shedding	Un-Restricted Demand
1.00	5559	3	5562
2.00	5382	0	5382
3.00	5171	0	5171
4.00	4994	0	4994
5.00	4776	0	4776
6.00	4506	0	4506
7.00	4428	0	4428
8.00	4363	0	4363
9.00	4638	0	4638
10.00	5263	0	5263
11.00	5574	9	5583
12.00	5771	0	5771
13.00	5833	0	5833
14.00	6038	0	6038
15.00	6146	43	6189
15.29.40	6260	0	6260
16.00	6156	0	6156
17.00	5951	0	5951
18.00	5570	0	5570
19.00	5086	20	5106
19.21	5273	0	5273
20.00	5530	0	5530
21.00	5882	2	5884
22.00	6076	9	6085
24.00	5940	10	5950
<b>Total (IN MUS)</b>	<b>130.580</b>	<b>0.129</b>	<b>130.709</b>



**11 LOAD PATTERN OF DELHI ON THE DAY OF MAXIMUM UN-RESTRICTED DEMAND DURING JUNE 2016 ON 30.06.2016- 6260MW AT 15.29.40HRS.**

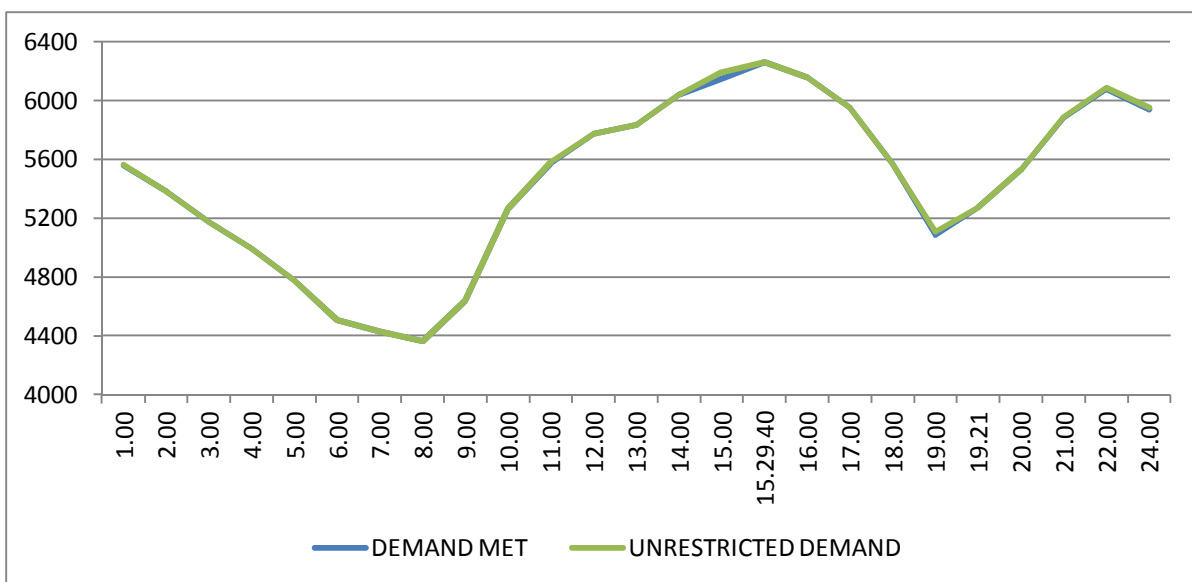
All figures in MW

Hrs.	Demand	Load Shedding	Un-Restricted Demand
1.00	5559	3	5562
2.00	5382	0	5382
3.00	5171	0	5171
4.00	4994	0	4994
5.00	4776	0	4776
6.00	4506	0	4506
7.00	4428	0	4428
8.00	4363	0	4363
9.00	4638	0	4638
10.00	5263	0	5263
11.00	5574	9	5583
12.00	5771	0	5771
13.00	5833	0	5833
14.00	6038	0	6038
15.00	6146	43	6189
15.29.40	6260	0	6260
16.00	6156	0	6156
17.00	5951	0	5951
18.00	5570	0	5570
19.00	5086	20	5106
19.21	5273	0	5273
20.00	5530	0	5530
21.00	5882	2	5884
22.00	6076	9	6085
24.00	5940	10	5950
<b>Total (IN MUS)</b>	<b>130.580</b>	<b>0.129</b>	<b>130.709</b>



**12 LOAD PATTERN OF DELHI ON THE DAY OF MAXIMUM ENERGY CONSUMED  
DURING JUNE 2016 – 30.06.2016 – 130.580Mus All figures in MW**

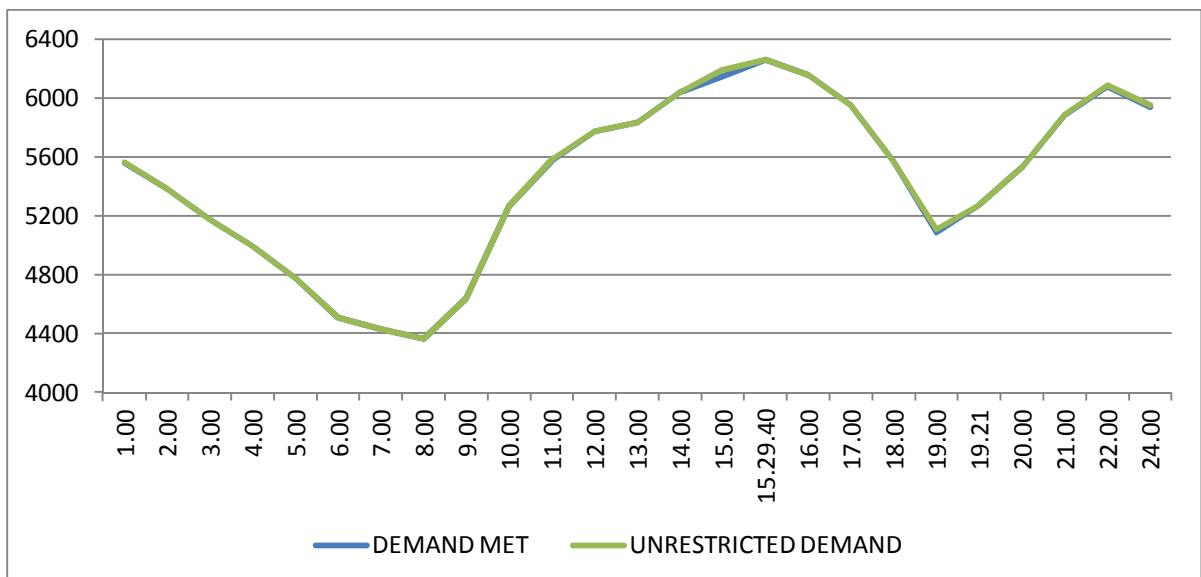
Hrs.	Demand	Load Shedding	Un-Restricted Demand
1.00	5559	3	5562
2.00	5382	0	5382
3.00	5171	0	5171
4.00	4994	0	4994
5.00	4776	0	4776
6.00	4506	0	4506
7.00	4428	0	4428
8.00	4363	0	4363
9.00	4638	0	4638
10.00	5263	0	5263
11.00	5574	9	5583
12.00	5771	0	5771
13.00	5833	0	5833
14.00	6038	0	6038
15.00	6146	43	6189
15.29.40	6260	0	6260
16.00	6156	0	6156
17.00	5951	0	5951
18.00	5570	0	5570
19.00	5086	20	5106
19.21	5273	0	5273
20.00	5530	0	5530
21.00	5882	2	5884
22.00	6076	9	6085
24.00	5940	10	5950
<b>Total (IN MUS)</b>	<b>130.580</b>	<b>0.129</b>	<b>130.709</b>



### LOAD PATTERN OF DELHI ON THE DAY OF MAXIMUM UNRESTRICTED ENERGY DEMAND DURING JUNE 2016 – 30.06.2016 – 130.709 Mus

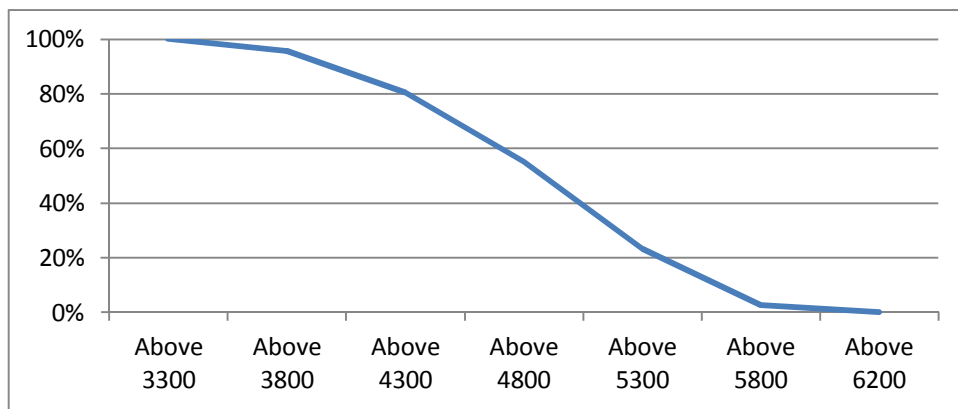
All figures in MW

Hrs.	Demand	Load Shedding	Un-Restricted Demand
1.00	5559	3	5562
2.00	5382	0	5382
3.00	5171	0	5171
4.00	4994	0	4994
5.00	4776	0	4776
6.00	4506	0	4506
7.00	4428	0	4428
8.00	4363	0	4363
9.00	4638	0	4638
10.00	5263	0	5263
11.00	5574	9	5583
12.00	5771	0	5771
13.00	5833	0	5833
14.00	6038	0	6038
15.00	6146	43	6189
15.29.40	6260	0	6260
16.00	6156	0	6156
17.00	5951	0	5951
18.00	5570	0	5570
19.00	5086	20	5106
19.21	5273	0	5273
20.00	5530	0	5530
21.00	5882	2	5884
22.00	6076	9	6085
24.00	5940	10	5950
<b>Total (IN MUS)</b>	<b>130.580</b>	<b>0.129</b>	<b>130.709</b>



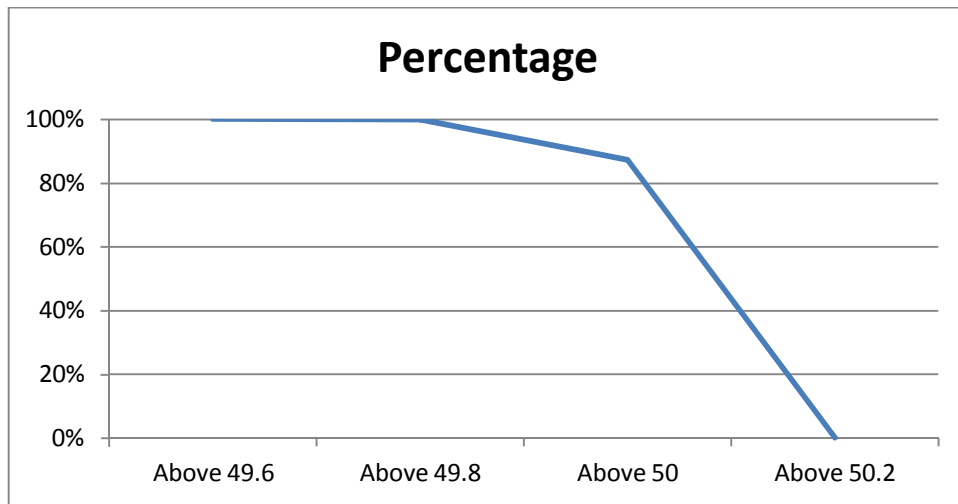
14 LOAD DURATION CURVE FOR JUNE 2016

Load in MW	Percentage of Time
Above 3300	100%
Above 3800	95.66%
Above 4300	80.45%
Above 4800	55.17%
Above 5300	23.30%
Above 5800	2.78%
Above 6200	0.07%



**FREQUENCY ANALYSIS FOR THE MONTH OF JUNE 2016**

<b>Frequency Range in Hz.</b>	<b>Percentage of time</b>
Above 49.6	100%
Above 49.8	99.90%
Above 50	87.40%
Above 50.2	0%



## 16 VOLTAGE PROFILE OF 220 KV SUB-STATIONS IN DELHI DURING JUNE 2016

All figures in kV

Date	NARELA		GAZIPUR	
	Max	Min	Max	Min
01.Jun.16	224.01	211.12	224.56	205.57
02.Jun.16	221.69	208.54	221.18	201.19
03.Jun.16	220.79	205.57	218.86	200.93
04.Jun.16	222.34	207.25	219.76	200.16
05.Jun.16	221.56	208.80	220.92	200.93
06.Jun.16	221.69	207.38	222.98	201.06
07.Jun.16	218.86	209.18	221.05	201.57
08.Jun.16	222.08	207.38	221.44	198.35
09.Jun.16	222.98	209.57	226.21	204.41
10.Jun.16	224.40	208.28	239.62	--
11.Jun.16	225.05	210.09	226.21	206.35
12.Jun.16	224.79	208.28	228.27	211.25
13.Jun.16	222.21	206.22	228.53	--
14.Jun.16	222.08	209.31	228.27	210.73
15.Jun.16	223.11	205.96	226.72	206.99
16.Jun.16	225.30	205.09	228.66	213.05
17.Jun.16	224.27	209.83	223.11	223.11
18.Jun.16	222.47	210.47	223.11	223.11
19.Jun.16	223.37	207.64	223.11	223.11
20.Jun.16	221.44	208.80	223.11	223.11
21.Jun.16	224.14	211.12	226.34	211.89
22.Jun.16	226.08	211.50	227.24	209.31
23.Jun.16	226.34	212.54	219.76	--
24.Jun.16	225.56	208.02	224.40	206.09
25.Jun.16	224.40	209.31	223.11	207.38
26.Jun.16	225.30	212.54	225.30	207.51
27.Jun.16	224.01	212.15	224.01	207.89
28.Jun.16	227.63	209.18	225.69	205.54
29.Jun.16	223.76	209.18	223.37	206.22
30.Jun.16	223.76	208.54	224.27	207.51



**17 VOLTAGE PROFILE OF 400 KV SUB-STATIONS IN DELHI DURING JUNE 2016**

**All figures in kV**

Date	400kV Bamnauli Grid Sub-Station				
	Max KV	Max Time	Min KV	Min Time	Average KV
01.Jun.16	412.23	05.03.37	383.85	14.39	396.71
02.Jun.16	406.83	05.43.11	377.05	14.34	392.63
03.Jun.16	404.25	06.02.06	370.49	22.38	389.99
04.Jun.16	406.60	06.01.40	375.18	00.00	389.79
05.Jun.16	405.19	17.31.17	376.12	00.05	392.20
06.Jun.16	407.54	05.27.19	376.35	14.52	392.53
07.Jun.16	401.91	08.13.49	376.12	22.15	390.04
08.Jun.16	407.54	06.03.52	375.65	14.51	392.42
09.Jun.16	408.94	06.02.07	377.52	15.24	393.70
10.Jun.16	416.21	17.04.24	378.70	14.27	396.46
11.Jun.16	412.46	06.00.58	376.12	14.55	398.02
12.Jun.16	412.46	08.04.11	384.56	22.41	398.48
13.Jun.16	408.71	18.50.25	379.16	14.21	394.90
14.Jun.16	408.94	06.04.11	383.15	22.12	395.78
15.Jun.16	407.77	06.02.25	378.70	14.55	394.83
16.Jun.16	409.88	06.00.30	383.85	23.32	395.36
17.Jun.16	406.37	06.00.51	382.21	14.19	395.34
18.Jun.16	404.49	06.15.19	383.15	11.23	392.46
19.Jun.16	406.60	07.58.14	382.92	22.13	395.10
20.Jun.16	404.25	19.02.01	385.26	00.34	395.14
21.Jun.16	408.94	06.01.43	387.84	15.14	397.79
22.Jun.16	408.01	05.30.47	382.92	22.25	396.24
23.Jun.16	405.43	06.03.42	383.85	14.30	394.55
24.Jun.16	404.25	08.02.07	376.82	14.38	391.79
25.Jun.16	405.19	08.02.00	381.51	11.20	392.26
26.Jun.16	407.77	08.01.00	386.90	22.10	296.81
27.Jun.16	407.77	06.03.00	388.78	22.38	396.36
28.Jun.16	411.29	05.37.00	380.81	14.38	396.35
29.Jun.16	406.83	07.03.00	384.56	12.23	394.78
30.Jun.16	406.83	06.03.00	381.98	15.35	392.86

Date	400kV Bawana Grid Sub-Station				
	Max KV	Max Time	Min KV	Min Time	Average KV
01.Jun.16	416.92	06.02.05	396.28	2234	406.24
02.Jun.16	413.63	05.33.05	392.76	11.47	403.93
03.Jun.16	412.23	05.03.54	389.95	22.33	402.59
04.Jun.16	413.17	06.00.55	390.42	22.14	401.82
05.Jun.16	411.99	17.30.55	392.06	00.05	403.40
06.Jun.16	414.34	06.02.15	393.94	22.19	404.19
07.Jun.16	410.12	08.14.21	390.89	22.21	402.19
08.Jun.16	414.57	06.04.24	393.70	14.54	403.21
09.Jun.16	414.34	06.01.44	396.05	00.17	403.88
10.Jun.16	417.15	17.02.03	393.47	15.31	406.28
11.Jun.16	419.03	06.01.13	394.88	14.53	408.45
12.Jun.16	418.09	06.06.53	393.23	23.47	406.18
13.Jun.16	415.51	18.50.13	392.06	14.21	404.91
14.Jun.16	415.51	00.14.21	396.28	14.51	407.96
15.Jun.16	416.92	06.02.22	391.59	14.53	405.17
16.Jun.16	419.73	06.01.13	396.05	22.12	406.43
17.Jun.16	416.68	06.01.51	394.41	14.23	404.83
18.Jun.16	414.57	06.04.05	396.28	00.53	403.49
19.Jun.16	416.68	07.59.23	393.70	22.20	405.39
20.Jun.16	412.23	19.02.13	395.58	00.09	404.55
21.Jun.16	417.15	06.01.31	399.10	14.37	407.07
22.Jun.16	416.92	05.59.00	395.58	22.32	406.07
23.Jun.16	414.57	06.57.35	393.70	14.30	404.33
24.Jun.16	413.63	06.01.29	389.01	14.40	401.86
25.Jun.16	414.81	08.02.00	393.23	11.44	402.54
26.Jun.16	416.21	08.01.00	398.16	22.09	406.07
27.Jun.16	415.04	06.03.00	398.39	14.29	405.09
28.Jun.16	420.20	05.35.00	388.54	21.57	406.50
29.Jun.16	412.70	07.03.00	391.59	12.20	402.76
30.Jun.16	412.70	06.01.00	392.06	15.28	401.66

## 18 DETAILS OF LUMPED CAPACITORS AT NEAREST 220 KV SUBSTATION

Sl. No	SUB-STATION	INSTALLED CAPACITY			
		66KV	33kV	11kV	TOTAL
<b>1</b>	<b>IP YARD</b>		30		<b>30</b>
1	Kamla Market			16.35	<b>16.35</b>
2	Minto Road				<b>0</b>
3	GB Pant Hosp			15.88	<b>15.88</b>
4	Delhi Gate			10.9	<b>10.9</b>
5	Tilakmarg			5.04	<b>5.04</b>
7	Cannaught Place			10.08	<b>10.08</b>
8	Kilokri		10.08	10.48	<b>20.56</b>
9	NDSE				<b>0</b>
11	Nizamuddin				<b>0</b>
12	Exhibition-I				<b>0</b>
13	Exhibition-II				<b>0</b>
14	Defence Colony				<b>0</b>
15	IG Stadium		10.08	5.45	<b>15.53</b>
16	Lajpat Nagar				<b>0</b>
17	IP Estate			10.9	<b>10.9</b>
	<b>LT BYPL</b>				<b>5.6</b>
		<b>0</b>	<b>50.16</b>	<b>85.08</b>	<b>140.84</b>
<b>2</b>	<b>Electric Lane</b>				
1	Electric Lane			5.04	<b>5.04</b>
2	Scindia House			5.04	<b>5.04</b>
3	Raisina Road			10.08	<b>10.08</b>
4	Raja Bazar			10.08	<b>10.08</b>
	<b>LT NDMC</b>				<b>12</b>
		<b>0</b>	<b>0</b>	<b>30.24</b>	<b>42.24</b>
<b>3</b>	<b>RPH Station</b>		20		<b>20</b>
1	Lahori Gate			10.49	<b>10.49</b>
2	Jama Masjid			10.48	<b>10.48</b>
4	Kamla Market				<b>0</b>
5	Minto Road			10.9	<b>10.9</b>
6	GB Pant Hosp				<b>0</b>
7	IG Stadium				<b>0</b>
	<b>LT BYPL</b>				<b>3</b>
		<b>0</b>	<b>20</b>	<b>31.87</b>	<b>54.87</b>
<b>4</b>	<b>Parkstreet S/stn</b>	20	20		<b>40</b>
1	Shastri Park		10.896	5.45	<b>16.346</b>
2	Faiz Road			18.05	<b>18.05</b>
3	Motia Khan			16.3	<b>16.3</b>
4	Prasad Nagar			16.25	<b>16.25</b>
5	Anand Parbat			10.8	<b>10.8</b>
6	Shankar Road			5.04	<b>5.04</b>
7	Rama Road			0	<b>0</b>
8	Baird Road			10.08	<b>10.08</b>
9	Hanuman Road			5.04	<b>5.04</b>
10	Pusa			5.44	<b>5.44</b>
11	Ridge Valley			0	<b>0</b>
12	B. D. Marg			0	<b>0</b>
13	Nirman Bhawan			5.04	<b>5.04</b>
	<b>LT BYPL</b>			0	<b>30.1</b>
		<b>20.00</b>	<b>30.90</b>	<b>97.49</b>	<b>178.486</b>
<b>5</b>	<b>Naraina S/stn</b>		20	5.04	<b>25.04</b>
1	DMS			10.85	<b>10.85</b>
2	Mayapuri		10.87	10.4	<b>21.27</b>
3	Inderpuri		10	4.8	<b>14.8</b>
4	Rewari line				<b>0</b>
5	Khyber Lane		10.05		<b>10.05</b>
6	Kirbi Place		10.05		<b>10.05</b>
7	Payal			7.2	<b>7.2</b>
8	Saraswati Garden			10.88	<b>10.88</b>
		<b>0</b>	<b>60.97</b>	<b>49.17</b>	<b>110.14</b>

Sl. No	SUB-STATION	INSTALLED CAPACITY			
		66KV	33kV	11kV	TOTAL
<b>6</b>	<b>Mehrauli S/stn</b>	80		5.04	<b>85.04</b>
1	Adchini			14.61	<b>14.61</b>
2	Andheria Bagh			10.85	<b>10.85</b>
3	IIT			10.9	<b>10.9</b>
4	JNU		10.03	10.03	<b>20.06</b>
5	Bijwasan			15.47	<b>15.47</b>
6	DC Saket			9.98	<b>9.98</b>
7	Malviya Nagar				<b>0</b>
8	C Dot			10.48	<b>10.48</b>
9	Vasant kunj B-Blk	21.79		10.9	<b>32.69</b>
10	Vasant kunj C-Blk	20.16		10.48	<b>30.64</b>
11	Palam				<b>0</b>
12	IGNOU			5.04	<b>5.04</b>
13	R. K. Puram-I			10.07	<b>10.07</b>
14	Vasant Vihar			19.25	<b>19.25</b>
15	Pusp Vihar			10.44	<b>10.44</b>
16	Bhikaji Cama Place		10.08	10.07	<b>20.15</b>
	<b>LT BRPL</b>				<b>25</b>
		<b>121.95</b>	<b>20.11</b>	<b>163.61</b>	<b>330.67</b>
<b>7</b>	<b>Vasantkunj S/stn</b>	40		5.04	<b>45.04</b>
1	R. K. Puram-II			10.08	<b>10.08</b>
2	Vasant kunj C-Blk				<b>0</b>
3	Vasant kunj D-Blk			9.63	<b>9.63</b>
4	Ridge Valley				<b>0</b>
	<b>LT BRPL</b>				<b>33.2</b>
		<b>40</b>	<b>0</b>	<b>24.75</b>	<b>97.95</b>
<b>8</b>	<b>Okhla S/stn</b>	60	10	5.04	<b>75.04</b>
1	Balaji			10.8	<b>10.8</b>
2	East of Kailash			15.89	<b>15.89</b>
3	Alaknanda			16.3	<b>16.3</b>
4	Malviya Nagar	21.79		10.85	<b>32.64</b>
5	Masjid Moth			16.3	<b>16.3</b>
6	Nehru Place			21.34	<b>21.34</b>
7	Okhla Ph-I	21.79		16.3	<b>38.09</b>
8	Okhla Ph-II		20.93	15.47	<b>36.4</b>
9	Shivalik			10.8	<b>10.8</b>
10	Batra			15.9	<b>15.9</b>
11	VSNL			10.9	<b>10.9</b>
12	Siri Fort			10.49	<b>10.49</b>
13	Tuglakabad			10.85	<b>10.85</b>
	<b>LT BRPL</b>				<b>59</b>
		<b>103.58</b>	<b>30.93</b>	<b>187.23</b>	<b>380.74</b>
<b>9</b>	<b>Lodhi Road S/stn</b>		20		<b>20</b>
1	Defence Colony		14.85		<b>14.85</b>
2	Hudco		10.9		<b>10.9</b>
3	Lajpat Nagar		10.9		<b>10.9</b>
4	Nizamuddin		10.44		<b>10.44</b>
5	Vidyut Bhawan				<b>0</b>
6	Ex. Gr. II				<b>0</b>
7	IHC				<b>0</b>
	<b>LT BRPL</b>				<b>42</b>
		<b>0</b>	<b>67.09</b>	<b>0</b>	<b>109.09</b>
<b>10</b>	<b>Sarita Vihar S/stn</b>	20		5.04	<b>25.04</b>
1	Sarita Vihar			10.07	<b>10.07</b>
2	MCIE			10.06	<b>10.06</b>
3	Mathura Road	20.16		11.69	<b>31.85</b>
4	Jamia Millia			10.89	<b>10.89</b>
5	Sarai Julena		10.08	16.29	<b>26.37</b>
6	Jasola			5.44	<b>5.44</b>
	<b>LT BRPL</b>				<b>23.6</b>
		<b>40.16</b>	<b>10.08</b>	<b>69.48</b>	<b>143.32</b>

Sl. No	SUB-STATION	INSTALLED CAPACITY			
		66KV	33kV	11kV	TOTAL
<b>11</b>	<b>Wazirabad</b>				
1	Bhagirathi		14.4	10.9	<b>25.3</b>
2	Ghonda	21.79	22.56	15.94	<b>60.29</b>
3	Seelam Pur		10.08	21.39	<b>31.47</b>
4	Dwarkapuri			15.46	<b>15.46</b>
5	Nandnagri	20.16		16.35	<b>36.51</b>
6	Yamuna Vihar			16.2	<b>16.2</b>
7	East of Loni Road			10.8	<b>10.8</b>
8	Shastri Park			10.9	<b>10.9</b>
9	Karawal Nagar			5.4	<b>5.4</b>
10	Sonia Vihar			7.2	<b>7.2</b>
	<b>LT BYPL</b>				<b>10</b>
		<b>41.95</b>	<b>47.04</b>	<b>130.54</b>	<b>229.53</b>
<b>12</b>	<b>Geeta Colony</b>				
1	Geeta Colony				<b>0</b>
2	Kanti Nagar			10.49	<b>10.49</b>
3	Kailash Nagar			10.9	<b>10.9</b>
4	Seelam Pur			15.48	<b>15.48</b>
5	Shakar Pur				<b>0</b>
	<b>LT BYPL</b>				<b>5.8</b>
		<b>0</b>	<b>0</b>	<b>36.87</b>	<b>42.67</b>
<b>13</b>	<b>Gazipur S/stn</b>	40		5.04	<b>45.04</b>
1	Dallupura	28.8		10.9	<b>39.7</b>
2	Vivek Vihar			9.57	<b>9.57</b>
3	GT Road			10.85	<b>10.85</b>
4	Kondli	20.16		10.85	<b>31.01</b>
5	MVR-I			10.9	<b>10.9</b>
6	MVR-II	20.16		10.9	<b>31.06</b>
7	PPG Ind. Area			10.06	<b>10.06</b>
	<b>LT BYPL</b>				<b>20.6</b>
		<b>109.12</b>	<b>0</b>	<b>79.07</b>	<b>208.79</b>
<b>14</b>	<b>Patparganj S/stn</b>	40	20	5.04	<b>65.04</b>
1	GH-I	19.89		10.45	<b>30.34</b>
2	GH-II	20.09		10.9	<b>30.99</b>
3	CBD		10.03	15.48	<b>25.51</b>
4	Guru Angad Nagar			15.49	<b>15.49</b>
5	Karkadooma		10.8	10.44	<b>21.24</b>
6	Preet Vihar			10.07	<b>10.07</b>
7	CBD-II			10.8	<b>10.8</b>
8	Shakarpur			10.8	<b>10.8</b>
9	Jhilmil			10.8	<b>10.8</b>
10	Dilshad Garden	20.16		16.35	<b>36.51</b>
11	Khichripur	21.79		10.49	<b>32.28</b>
12	Mother Dairy				<b>0</b>
13	Scope Building				<b>0</b>
14	Vivek Vihar				<b>0</b>
15	Akhardham			14.6	<b>14.6</b>
	<b>LT BYPL</b>				<b>23.3</b>
		<b>121.93</b>	<b>40.83</b>	<b>151.71</b>	<b>337.77</b>
<b>15</b>	<b>Najafgarh S/stn</b>	60		5.04	<b>65.04</b>
1	A4 Paschim Vihar			10.8	<b>10.8</b>
2	Nangloi	21.73		15.84	<b>37.57</b>
3	Nangloi W/W	20.89		10.85	<b>31.74</b>
4	Pankha Road			15.88	<b>15.88</b>
5	Jaffarpur			15.43	<b>15.43</b>
7	Inst. Area Janakpuri			17.6	<b>17.6</b>
8	Paschimpuri		10.05	15.47	<b>25.52</b>
9	Paschim Vihar	41.83		15.43	<b>57.26</b>
10	Mukherjee Park			20.83	<b>20.83</b>
11	Udyog Nagar			10.43	<b>10.43</b>
12	Choukhandi			10.07	<b>10.07</b>
	<b>LT BRPL</b>				<b>27</b>
		<b>144.45</b>	<b>10.05</b>	<b>163.67</b>	<b>345.17</b>

Sl. No	SUB-STATION	INSTALLED CAPACITY			
		66KV	33kv	11kv	TOTAL
<b>16</b>	<b>Pappankalan-I S/stn</b>	20		5.04	<b>25.04</b>
1	Bindapur Grid G-3 PPK	21.73		15.85	<b>37.58</b>
2	Bodella-I	20.1		16.24	<b>36.34</b>
3	Bodella-II	21.73		17.64	<b>39.37</b>
4	DC Janakpuri			10.03	<b>10.03</b>
5	G-2 PPK			10.8	<b>10.8</b>
6	G-5 PPK			15.51	<b>15.51</b>
7	G-6 PPK			5.4	<b>5.4</b>
8	G-15 PPK			10.8	<b>10.8</b>
9	Harinagar	21.18		16.25	<b>37.43</b>
10	Rewari line			5.44	<b>5.44</b>
	<b>LT BRPL</b>				<b>13.5</b>
		<b>104.74</b>	<b>0</b>	<b>129</b>	<b>247.24</b>
<b>17</b>	<b>BBMB Rohtak Road</b>				
1	S.B. Mill			10.07	<b>10.07</b>
2	Rama Road			10.88	<b>10.88</b>
3	Ram Pura			10.48	<b>10.48</b>
4	Rohtak Road			8.04	<b>8.04</b>
5	Vishal			10.4	<b>10.4</b>
6	Tri Nagar			5.44	<b>5.44</b>
7	Madipur			10.43	<b>10.43</b>
8	Sudershan Park			10.08	<b>10.08</b>
9	Kirti Nagar			5.44	<b>5.44</b>
		<b>0</b>	<b>0</b>	<b>81.26</b>	<b>81.26</b>
<b>18</b>	<b>Shalimarbagh S/stn</b>		40	6	<b>46</b>
1	S.G.T. Nagar			5.44	<b>5.44</b>
2	Wazirpur-1			17.18	<b>17.18</b>
3	Wazirpur-2			11.39	<b>11.39</b>
4	Ashok Vihar			5.44	<b>5.44</b>
5	Rani Bagh			10.88	<b>10.88</b>
6	Haiderpur			11.39	<b>11.39</b>
7	SMB FC			5.44	<b>5.44</b>
8	SMB KHOSLA			5.44	<b>5.44</b>
	<b>LT TPDDL</b>				<b>30</b>
		<b>0</b>	<b>40</b>	<b>78.6</b>	<b>148.6</b>
<b>19</b>	<b>Subzimandi S/stn</b>			6	<b>6</b>
1	Shakti Nagar			5.94	<b>5.94</b>
2	Gulabibagh			10.88	<b>10.88</b>
3	Shahzadabagh			13.68	<b>13.68</b>
4	DU			5.44	<b>5.44</b>
5	Tripolia			10.88	<b>10.88</b>
	B. G. Road			5.4	<b>5.4</b>
	<b>LT BYPL</b>				<b>0.9</b>
	<b>LT TPDDL</b>				<b>20</b>
		<b>0</b>	<b>0</b>	<b>58.22</b>	<b>79.12</b>
<b>20</b>	<b>Narela S/stn</b>	40		5.04	<b>45.04</b>
1	A-7 Narela			10.88	<b>10.88</b>
2	AIR Kham pur			6	<b>6</b>
3	Ashok vihar			10.48	<b>10.48</b>
4	Azad Pur			5.44	<b>5.44</b>
5	Tri Nagar			5.44	<b>5.44</b>
6	Badli	20		5.95	<b>25.95</b>
7	DSIDC Narela-1			5.95	<b>5.95</b>
8	GTK			5.44	<b>5.44</b>
9	Jahangirpuri	20	10	0	<b>30</b>
10	Bhalswa			3.6	<b>3.6</b>
	<b>LT TPDDL</b>				<b>10</b>
		<b>80</b>	<b>10</b>	<b>64.22</b>	<b>164.22</b>

Sl. No	SUB-STATION	INSTALLED CAPACITY			
		66KV	33kV	11kV	TOTAL
<b>21</b>	<b>Gopalpur S/stn</b>		30	5.04	<b>35.04</b>
1	Azad Pur			10.88	<b>10.88</b>
2	Hudson Lane			5.44	<b>5.44</b>
3	Wazirabad			2.4	<b>2.4</b>
4	Indra Vihar			5.44	<b>5.44</b>
6	GTK Road			5.94	<b>5.94</b>
7	Jahangirpuri		10	5.95	<b>15.95</b>
8	Civil lines			5.44	<b>5.44</b>
9	Pitam Pura-1			5.44	<b>5.44</b>
10	Pitam Pura-3			5.44	<b>5.44</b>
11	Air Khampur			5.95	<b>5.95</b>
12	SGT Nagar			5.95	<b>5.95</b>
13	Tiggipur			10.88	<b>10.88</b>
	<b>LT TPDDL</b>				<b>29</b>
		<b>0</b>	<b>40</b>	<b>80.19</b>	<b>149.19</b>
<b>22</b>	<b>Rohini S/stn</b>	40		6	<b>46</b>
1	Rohini Sec-22			10.88	<b>10.88</b>
2	Rohini Sec-23	20		5.44	<b>25.44</b>
3	Rohini Sec-24			5.44	<b>5.44</b>
4	Rohini-1			5.44	<b>5.44</b>
5	Rohini-3			5.95	<b>5.95</b>
6	Rohini-4			11.39	<b>11.39</b>
7	Rohini-5			11.39	<b>11.39</b>
8	Rohini-6			5.95	<b>5.95</b>
9	Mangolpuri-1			16.83	<b>16.83</b>
10	Mangolpuri-2	20		5.94	<b>25.94</b>
11	Pitam Pura-1	20		5.04	<b>25.04</b>
12	Pitam Pura-2			10.48	<b>10.48</b>
13	Rohini DC-1			14.4	<b>14.4</b>
	<b>LT TPDDL</b>				<b>30</b>
		<b>100</b>	<b>0</b>	<b>120.57</b>	<b>250.57</b>
<b>23</b>	<b>Kanjhawala S/stn</b>	20		5.04	<b>25.04</b>
1	Bawana Clear Water			10.88	<b>10.88</b>
2	Pooth Khoord			5.44	<b>5.44</b>
		<b>20</b>	<b>0</b>	<b>21.36</b>	<b>41.36</b>
<b>24</b>	<b>BAWANA S/stn</b>				
1	Bawana S/stn No. 6			10.88	<b>10.88</b>
2	Bawana S/stn No. 7				<b>0</b>
		<b>0</b>	<b>0</b>	<b>10.88</b>	<b>10.88</b>
<b>25</b>	<b>Kashmerigate S/stn</b>			5.04	<b>5.04</b>
1	Civil lines			5.44	<b>5.44</b>
2	Town Hall			8.64	<b>8.64</b>
3	Fountain			5.45	<b>5.45</b>
	<b>LT BYPL</b>				<b>2.7</b>
		<b>0</b>	<b>0</b>	<b>24.57</b>	<b>27.27</b>
<b>26</b>	<b>Pappankalan-II</b>				
1	DMRC-I				<b>0</b>
2	DMRC-II				<b>0</b>
<b>27</b>	<b>Trauma Center (AIIMS)</b>				
1	AIIMS		13.26	5.04	<b>18.3</b>
2	Trauma Center			10.08	<b>10.08</b>
3	Netaji Nagar			15.12	<b>15.12</b>
4	Sanjay Camp			10.08	<b>10.08</b>
5	Kidwai Nagar			5.04	<b>5.04</b>
6	SJ Airport			5.04	<b>5.04</b>
	Race Course			5.04	<b>5.04</b>
		<b>0</b>	<b>13.26</b>	<b>55.44</b>	<b>68.7</b>

Sl. No	SUB-STATION	INSTALLED CAPACITY			
		66KV	33kV	11kV	TOTAL
<b>28</b>	<b>MUNDKA</b>				
	Rohini-2			11.39	11.39
	<b>LT BRPL</b>				<b>18.5</b>
		<b>0</b>	<b>0</b>	<b>11.39</b>	<b>29.89</b>
<b>29</b>	<b>DSIDC BAWANA</b>				
	DSIDC NRL-1	20			20
	DSIDC NRL-2			10.88	10.88
		<b>20</b>	<b>0</b>	<b>10.88</b>	<b>30.88</b>
<b>30</b>	<b>RIDGE VALLEY</b>				
	Keventry Diary			10.08	10.08
	Nehru Park			5.04	5.04
	Bapu Dham			10.08	10.08
		<b>0</b>	<b>0</b>	<b>25.2</b>	<b>25.2</b>
<b>31</b>	<b>IP EXTN (PRAGATI)</b>				
	Vidyut Bhawan			10.08	10.08
	Dalhousie Road			5.04	5.04
	School Lane			5.04	5.04
	<b>LT NDMC</b>				<b>12.29</b>
		<b>0</b>	<b>0</b>	<b>20.16</b>	<b>32.45</b>
	<b>TOTAL CAPACITY</b>	<b>1067.9</b>	<b>491.4</b>	<b>2092.7</b>	<b>4139</b>

Utility	HT	LT	Total
<b>BYPL</b>	<b>864</b>	<b>102</b>	<b>966</b>
<b>TPDDL</b>	<b>657</b>	<b>119</b>	<b>776</b>
<b>NDMC</b>	<b>180</b>	<b>24</b>	<b>204</b>
<b>DTL</b>	<b>754</b>	<b>0</b>	<b>754</b>
<b>BRPL</b>	<b>1158</b>	<b>242</b>	<b>1400</b>
<b>RPH</b>	<b>20</b>	<b>0</b>	<b>20</b>
<b>MES</b>	<b>20</b>	<b>0</b>	<b>20</b>
<b>TOTAL</b>	<b>3652</b>	<b>487</b>	<b>4139</b>



**20 DETAILS OF BREAK-DOWNS DURING THE MONTH OF JUNE 2016**

SL NO	OCCURRENCE OF BREAK-DOWN		DETAILS OF THE BREAKDOWN	TIME OF RESTORATION		REMARKS
	DATE	TIME		DATE	TIME	
1	1.6.16	07:24	LODHI RD 220/33kv 100MVA Tx-I	1.6.16	11:25	TR. TRIPPED ON 186X, 186A&B.
2	1.6.16	07:50	PARKSTREET 220/33kv 100MVA Tx-II	1.6.16	08:04	TR. TRIPPED ON E/F.
3	2.6.16	09:52	220kv MEHRAULI - BTPS CKT. - II	2.6.16	13:08	AT MEHRAULI CKT .TRIPPED ON 186A, 186B, DIST. PROT., ZONE-II, DIST 14.63KM, TRIP PHASE ABC. AT BTPS CKT. ZONE-I, R PHASE DIST 1.6KM.
4	2.6.16	14:20	SHALIMAR BAGH 220/33kv 100MVA Tx-I	2.6.16	14:50	TR. TRIPPED ON 30D, OLTC, BUCHHOLZ.
5	3.6.16	17:35	220kv MEHRAULI - BTPS CKT. - II	3.6.16	19:00	AT MEHRAULI CKT. TRIPPED ON 186 A&B, DIST. PROT, DIST 4.479KM. AT BTPS ZONE-I, DIST. PROT, DIST 15.1KM.
6	3.6.16	20:54	PAPPANKALAN-I 220/66kv 100MVA Tx-IV	4.6.16	10:35	TR. TRIPPED ON 86B. GROUP B, OLTC, BUCHHOLZ, SUDDEN PRESSURE TRIP.
7	5.6.16	14:19	220kv PRAGATI - SARITA VIHAR CKT-II	5.6.16	14:55	AT PRAGATI CKT. TRIPPED ON 86X, TRIP ABC PHASE, DIST PROT, ZONE-II, 186. AT SARITA VIHAR CKT. TRIPPED ON TRIP PHASE ABC, 186B, 186X, DIST PROT, ZONE-I, DIST 897MTS.
8	6.6.16	10:16	NARELA 66/11kv, 20MVA Tx-II	6.6.16	12:21	TR. TRIPPED ON 86, 186, BUCHHOLZ.
9	7.6.16	11:07	220kv MEHRAULI - BTPS CKT. - II	7.6.16	22:19	AT MEHRAULI CKT. TRIPPED ON DIST PROT, ZONE-II, 186, DIST 14.49KM. AT BTPS CKT. DID NOT TRIP.
10	7.6.16	11:07	220kv MEHRAULI - BTPS CKT. - I	7.6.16	12:52	AT MEHRAULI CKT. TRIPPED ON DIST PROT, ZONE-II, 186, TRIP PHASE ABC, DIST 15.24KM. AT BTPS CKT. TRIPPED ON DIST PROT, ZONE-I, Y PHASE, DIST 2.39KM, E/F.
11	8.6.16	11:10	220kv GAZIPUR - BTPS CKT	8.6.16	16:49	AT GAZIPUR CKT. TRIPPED ON DIST PROT, ZONE-I, R&B PHASE. AT BTPS CKT. WAS IN OFF POSITION.
12	9.6.16	14:28	GAZIPUR 220/66kv 100MVA Tx-II	9.6.16	15:40	TR. TRIPPED ON GEN TRIP, OVER FLUX.
13	9.6.16	16:36	220kv NARAINA-RIDGE VALLEY CKT-I	9.6.16	18:20	AT NARAINA CKT. TRIPPED ON DIRECTIONAL E/F, AUTO RECLOSE. CKT DIDNOT TRIP AT RIDGE VALLEY.
14	9.6.16	17:08	220kv BAMNAULI-NARAINA CKT-I	9.6.16	17:40	AT BAMNAULI CKT. TRIPPED ON ZONE-I, Y PHASE, DIST PROT, DIST 11.69KM. AT NARAINA CKT. TRIPPED ON DIST PROT, B PHASE, 86B, 186A, 186B.
15	9.6.16	18:09	400kv Ballabgarh-Bamnauli Ckt-II	9.6.16	19:06	AT BAMNAULI CKT. TRIPPED ON DIST PROT., ZONE-I, RYB PHASE, DIST 33.87KM. AT BALLABGARH TRIPPED ON DIST. PROT, ZONE-I, R PHASE DIST 21.4KM.
16	10.6.16	04:22	NARELA 66/11kv, 20MVA Tx-II	10.6.16	12:51	TR. TRIPPED ON 30B, OLTC BUCHOLZ.
17	10.6.16	15:36	220kv GOPALPUR-MANDOLACKT-II	10.6.16	16:08	AT MANDOLA CKT. TRIPPED ON DIST PROT, DIST 14KM, RYB PHASE. AT GOPALPUR CKT. TRIPPED ON ZONE-I, GEN TRIP, DIST 2.4KM.
18	10.6.16	15:44	220kv GOPALPUR-MANDOLACKT-I	10.6.16	16:41	AT MANDOLA CKT. TRIPPED ON DIST PROT, R&Y PHASE, DIST 18KM. AT GOPALPUR DIST PROT, ZONE-I, RYB PHASE.
19	10.6.16	16:47	220kv BAWANA-DSIIDC BAWANA CKT-I	10.6.16	17:20	AT BAWANA CKT. TRIPPED ON DIST PROT, RYB PHASE, 86B. AT DSIDC BAWANA CKT. DID NOT TRIPPED.

SL NO	OCCURRENCE OF BREAK-DOWN		DETAILS OF THE BREAKDOWN	TIME OF RESTORATION		REMARKS
	DATE	TIME		DATE	TIME	
20	10.6.16	16:47	220kV DSIIDC BAWANA-NARELA CKT-I	10.6.16	18:31	AT DSIDC BAWANA CKT. TRIPPED ON AUTO RECLOSE LOCKOUT, C PHASE, DIST PROT, DIST 8.804KM. AT NARELA CKT. WAS IN OFF POSITION.
21	10.6.16	16:47	220kV BAWANA-DSIIDC BAWANA CKT-II	10.6.16	17:19	AT BAWANA CKT. TRIPPED ON DIST PROT, RYB PHASE, 86B. AT DSIDC BAWANA CKT. DID NOT TRIP.
22	10.6.16	16:48	220kV WAZIRABAD-GEETA COLONY CKT-II	10.6.16	17:06	At Wazirabad : Dist. Prot, Zone-1, RYB Phsae. Dist. 0.0Km. At Geeta Colony : Dist prot, Z-2, Dist 5.758Kms, E/F.
23	10.6.16	16:48	220kV WAZIRABAD-GEETA COLONY CKT-I	10.6.16	17:09	At Geeta Colony : Dist prot, zone-2,Dist 7.354Kms.E/F. At Wazirabad :RYB Phase, Z-I, Dist prot, Dist. 6.3Km.
24	10.6.16	16:48	WAZIRABAD 220/66kV 100MVA Tx-I	10.6.16	17:03	Tr. Tripped on E/F.
25	10.6.16	16:48	WAZIRABAD 220/66kV 100MVA Tx-III	10.6.16	17:03	Tr. Tripped on E/F.
26	10.6.16	16:57	220kV PRAGATI - SARITA VIHAR CKT-II	10.6.16	17:30	AT SARITA VIHAR CKT. TRIPPED ON DIST PROT, ABC PHASE, ZONE-I, DIST 7.881KM, 86A&B. AT PRAGATI TRIPPED ON ABC PHASE, 186-186.
27	10.6.16	17:13	220kV GEETA COLONY- PATPARGANJ CKT -II	10.6.16	17:20	AT GEETA COLONY CKT. TRIPPED ON SOTF, DIST PROT. AT PATPARGANJ CKT. DID NOT TRIP.
28	10.6.16	17:13	220kV GEETA COLONY- PATPARGANJ CKT-I	10.6.16	17:20	AT GEETA COLONY CKT. TRIPPED ON SOTF, DIST PROT. AT PATPARGANJ CKT. DID NOT TRIP.
29	11.6.16	04:22	NARELA 66/11kV, 20MVA Tx-II	11.6.16	12:51	TR. TRIPPED ON 30B, OLTC.
30	11.6.16	14:39	SHALIMAR BAGH 220/33kV 100MVA Tx-I	11.6.16	15:26	TR. TRIPPED ON 86.
31	11.6.16	15:56	LODHI RD 220/33kV 100MVA Tx-II	11.6.16	16:28	TRIPPED ON 67N, 86A & B.
32	12.6.16	14:30	SHALIMAR BAGH 220/33kV 100MVA Tx-I	12.6.16	17:00	TR. TRIPPED ON BUCHHOLZ.
33	12.6.16	22:52	PAPPANKALAN-I 220/66kV 160MVA Tx-I	12.6.16	23:30	TR. TRIPPED ON O/C.
34	12.6.16	22:52	PAPPANKALAN-I 220/66kV 100MVA Tx-I	12.6.16	23:16	TR. TRIPPED ON 86B.
35	13.6.16	05:04	GAZIPUR 220/66kV 100MVA Tx-II	13.6.16	05:22	TR. TRIPPED ON OVER FLUX.
36	13.6.16	07:09	PRAGATI 220/66kV 160MVA Tx-I	13.6.16	07:50	Monkey found electrocuted on 66kV Bus section-III in GPTS Yard and B phase Jumper and Y Phase insulator damaged. 66kV I/C-I closed at 07.37hrs. but made off at 07.38hrs. due to sparking observed on Bus isolator of G.T.-#6.
37	13.6.16	07:09	PRAGATI 220/66kV 160MVA Tx-II	13.6.16	08:10	Monkey found electrocuted on 66kV Bus section-III in GPTS Yard and B phase Jumper and Y Phase insulator damaged. 66kV I/C-I closed at 07.37hrs. but made off at 07.38hrs. due to sparking observed on Bus isolator of G.T.-#6.
38	13.6.16	15:12	GAZIPUR 220/66kV 100MVA Tx-II	13.6.16	15:42	TR. TRIPPED ON BUS BAR PROTECTION.
39	13.6.16	15:12	GAZIPUR 220/66kV 160MVA Tx-I	13.6.16	15:42	TR. TRIPPED ON BUS BAR PROTECTION.
40	13.6.16	15:12	220KV GAZIPUR - MAHARANIBAGH CKT. -II	13.6.16	15:38	AT GAZIPUR CKT. TRIPPED DUE TO OPERATION OF BUS BAR PROTECTION. AT MAHARANI BAGH CKT. DID NOT TRIP.

SL NO	OCCURRENCE OF BREAK-DOWN		DETAILS OF THE BREAKDOWN	TIME OF RESTORATION		REMARKS
	DATE	TIME		DATE	TIME	
41	13.6.16	18:50	220kV BAWANA - KANJHAWALA CKT-2	13.6.16	20:31	AT BAWANA CKT. TRIPPED ON AUTO RECLOSE LOCK OUT. AT KHANJAWALA CKT. DID NOT TRIP.
42	13.6.16	18:50	220kV BAWANA - KANJHAWALA CKT - 1	14.6.16	13:04	AT BAWANA CKT. TRIPPED ON AUTO RECLOSE LOCKOUT, DIST PROT, ZONE-I, DIST 6.97KM. AT KHANJAWALA CKT. TRIPPED ON DIST PROT, ZONE-I, RYB PHASE, DIST 11.8KM.
43	13.6.16	18:50	KANJHAWALA 220/66kV 160MVA Tx-I	13.6.16	19:58	TR. TRIPPED ON O/C, E/F.
44	13.6.16	19:16	400kV Bawana-Mundka Ckt-II	13.6.16	20:19	AT BAWANA CKT. TRIPPED ON 186. AT MUNDKA CKT. DID NOT TRIP.
45	13.6.16	19:16	400kV Bawana-Mundka Ckt-I	14.6.16	10:52	AT BAWANA CKT. TRIPPED ON 186. AT MUNDKA PUT OFF MANUALLY DUE TO HEAVY SPARKING AT B PHASE ISOLATOR JUMPER.
46	13.6.16	19:30	220kV GOPALPUR-MANDOLACKT-I	13.6.16	20:04	AT GOPALPUR CKT. TRIPPED ON DIST PROT, ZONE-I, Y&B PHASE. AT MANDOLA TRIPPED ON B PHASE NEUTRAL.
47	13.6.16	19:31	220kV WAZIRABAD-GEETA COLONY CKT-II	13.6.16	20:30	AT WAZIRABAD CKT. TRIPPED ON RYB PHASE, DIST. PROT, ZONE-I. AT GEETA COLONY TRIPPED ON DIST PROT, DIST 5.54KM.
48	13.6.16	19:31	WAZIRABAD 220/66kV 100MVA Tx-III	13.6.16	20:35	TR. TRIPPED ON E/F.
49	13.6.16	19:32	220 KV GOPALPUR-WAZIRABAD CKT - 1	13.6.16	21:26	AT WAZIRABAD CKT. TRIPPED ON DIST. PROT, B PHASE. ZONE-I. AT GOPALPUR CKT. DID NOT TRIP.
50	13.6.16	19:47	220kV PRAGATI - SARITA VIHAR CKT - I	13.6.16	20:20	At Pragati : Dist Prot., Zone-II, B Phase , Dist. 11.06Kms. At Sarita Vihar : ABC Phase, Zone-I, 186 A&B, Auto reclose.
51	13.6.16	19:47	220kV PRAGATI - SARITA VIHAR CKT-II	13.6.16	20:21	At Pragati : Dist Prot., ABC Phase , Dist. 0 Meter. At Sarita Vihar : Dist Prot, ABC Phase, Zone-I, Dist. 2.77Kms., 186 A&B.
52	13.6.16	19:47	220kV PRAGATI - PARK STREET CKT-II	13.6.16	20:11	AT PARK STREET CKT. TRIPPED ON 86ABC. AT PRAGATI CKT. DID NOT TRIP.
53	13.6.16	20:01	HARSH VIHAR 220/66KV 160MVA ICT-3	13.6.16	20:48	66KV I/C TRIPPED ON 86-1 & 2, TRIP CKT FAULTY.
54	13.6.16	20:01	HARSH VIHAR 220/66KV 160MVA ICT-1	13.6.16	20:48	66KV I/C TRIPPED ON 86-1 & 2, TRIP CKT FAULTY.
55	13.6.16	20:01	HARSH VIHAR 220/66KV 160MVA ICT-2	13.6.16	20:48	66KV I/C TRIPPED ON 86-1 & 2, TRIP CKT FAULTY.
56	14.6.16	06:02	GAZIPUR 220/66kV 100MVA Tx-II	14.6.16	06:30	TR. TRIPPED ON OVER FLUX AND GEN TRIP.
57	14.6.16	06:47	GAZIPUR 220/66kV 100MVA Tx-II	14.6.16	07:15	TR. TRIPPED ON OVER FLUX AND GEN TRIP.
58	14.6.16	08:05	GAZIPUR 220/66kV 100MVA Tx-II	14.6.16	12:04	TR. TRIPPED ON OVER FLUX AND GEN TRIP.
59	14.6.16	12:02	OKHLA 33kV NEHRU PLACE CKT-IV	14.6.16	12:07	TR. MADE OFF BY OPERATION STAFF DUE TO HEAVY SPARKING ON BUS ISOLATOR ON EMERGENCY BASIS.
60	15.6.16	06:32	DSIIDC Bawana 220/66kV 160MVA Tx-I	15.6.16	07:52	TR. MADE OFF FOR SAFETY PURPOSE AS BLAST OCCURED ON 66KV SPARE BAY NO. 619. EARTHING WIRE OF 66KV BUS-1 DAMAGED.
61	15.6.16	06:32	DSIIDC Bawana 66 KV DSIDC-2 CKT-2	15.6.16	14:45	CKT. MADE OFF FOR SAFETY PURPOSE AS BLAST OCCURED ON 66KV SPARE BAY NO. 619. EARTHING WIRE OF 66KV BUS-1 DAMAGED.
62	15.6.16	06:32	DSIIDC Bawana 220/66kV 100MVA Tx-II	15.6.16	08:02	TR. MADE OFF FOR SAFETY PURPOSE AS BLAST OCCURED ON 66KV SPARE BAY NO. 619. EARTHING WIRE OF 66KV BUS-1 DAMAGED.

SL NO	OCCURRENCE OF BREAK-DOWN		DETAILS OF THE BREAKDOWN	TIME OF RESTORATION		REMARKS
	DATE	TIME		DATE	TIME	
63	15.6.16	06:32	DSIIDC Bawana 66 KV BAWANA SECTOR-1 CKT-2	15.6.16	09:29	CKT. MADE OFF FOR SAFETY PURPOSE AS BLAST OCCURED ON 66KV SPARE BAY NO. 619. EARTHING WIRE OF 66KV BUS-1 DAMAGED.
64	15.6.16	06:32	DSIIDC Bawana 66 KV BAWANA SECTOR-1 CKT-1	15.6.16	09:29	CKT. MADE OFF FOR SAFETY PURPOSE AS BLAST OCCURED ON 66KV SPARE BAY NO. 619. EARTHING WIRE OF 66KV BUS-1 DAMAGED.
65	15.6.16	06:32	DSIIDC Bawana 220/66kV 100MVA Tx-III	15.6.16	08:02	TR. MADE OFF FOR SAFETY PURPOSE AS BLAST OCCURED ON 66KV SPARE BAY NO. 619. EARTHING WIRE OF 66KV BUS-1 DAMAGED.
66	15.6.16	06:32	DSIIDC Bawana 66 KV DSIDC-2 CKT-1	15.6.16	08:22	CKT. MADE OFF FOR SAFETY PURPOSE AS BLAST OCCURED ON 66KV SPARE BAY NO. 619. EARTHING WIRE OF 66KV BUS-1 DAMAGED.
67	15.6.16	06:32	220kV BAWANA-DSIIDC BAWANA CKT-II	15.6.16	07:52	CKT. MADE OFF FOR SAFETY PURPOSE AS BLAST OCCURED ON 66KV SPARE BAY NO. 619. EARTHING WIRE OF 66KV BUS-1 DAMAGED.
68	15.6.16	06:32	220kV BAWANA-DSIIDC BAWANA CKT-I	15.6.16	07:52	CKT. MADE OFF FOR SAFETY PURPOSE AS BLAST OCCURED ON 66KV SPARE BAY NO. 619. EARTHING WIRE OF 66KV BUS-1 DAMAGED.
69	16.6.16	00:04	220kV KANJHAWALA-NAJAFGARH CKT	16.6.16	00:20	AT NAJAFGARH CKT .TRIPPED ON 186. AT KHANJAWALA CKT. DID NOT TRIP.
70	16.6.16	00:04	NAJAFGARH 220/66kV 100MVA Tx-III	16.6.16	00:35	66KV I/C-III TRIPPED ON E/F.
71	16.6.16	00:04	NAJAFGARH 220/66kV 100MVA Tx-I	16.6.16	01:05	TR. TRIPPED ON HV, REF, 86.
72	17.6.16	17:53	220kV MEHRAULI - VASANT KUNJ CKT.-I	17.6.16	18:16	AT MEHRAULI CKT. TRIPPED ON DIST PROT, ZONE-II, DIST 6.42KM, 186A&B. AT VASANT KUNJ CKT. DID NOT TRIP.
73	17.6.16	19:26	WAZIRABAD 220/66kV 100MVA Tx-I	17.6.16	19:39	66KV I/C TRIPPED ON 86, E/F.
74	17.6.16	19:26	WAZIRABAD 220/66kV 100MVA Tx-II	17.6.16	19:39	66KV I/C TRIPPED ON 86, E/F.
75	17.6.16	19:26	WAZIRABAD 220/66kV 100MVA Tx-III	17.6.16	19:39	66KV I/C TRIPPED ON 86, E/F.
76	18.6.16	06:40	SARITA VIHAR 220/66kV 100MVA Tx-I	18.6.16	07:20	TR. TRIPPED DUE TO OPERATION OF BUS BAR PROTECTION.
77	18.6.16	06:40	SARITA VIHAR 220/66kV 100MVA Tx-II	18.6.16	07:20	TR. TRIPPED DUE TO OPERATION OF BUS BAR PROTECTION.
78	18.6.16	06:40	SARITA VIHAR 220/66kV 100MVA Tx-III	18.6.16	08:35	TR. TRIPPED ON GEN. TRIP, OVER FLUX, 96.
79	18.6.16	06:40	220kV PRAGATI - SARITA VIHAR CKT-II	19.6.16	17:32	At Sarita Vihar ckt. Tripped due to operation of Bus bar protection, 96. At Pragati ckt did not trip.
80	18.6.16	06:40	220kV PRAGATI - SARITA VIHAR CKT - I	19.6.16	17:32	At Sarita Vihar ckt. Tripped due to operation of Bus bar protection, 96. At Pragati ckt did not trip.
81	18.6.16	06:40	220kV SARITA VIHAR - BTPS CKT.-I	18.6.16	08:18	At BTPS ckt tripped on Dist prot, R Phase. At Sarita Vihar ckt. Tripped on 186 A&B, B Phase, Dist prot, Zone-I, Dist 5.682Kms.
82	18.6.16	12:21	220kV GAZIPUR - BTPS CKT	18.6.16	14:50	AT GAZIPUR CKT. TRIPPED ON E/F, ZONE-I, DIST PROT, DIST 6.9KM.
83	20.6.16	08:58	DIAL 220/66kV 160MVA Tx-I	20.6.16	09:08	TR. TRIPPEDON 86A&B, CB TROUBLE ALARM.

SL NO	OCCURRENCE OF BREAK-DOWN		DETAILS OF THE BREAKDOWN	TIME OF RESTORATION		REMARKS
	DATE	TIME		DATE	TIME	
84	20.6.16	14:17	VASANT KUNJ 220/66kV 100MVA Tx-II	20.6.16	19:25	TR. TRIPPED ON POLE DISCREPANCY.
85	20.6.16	14:30	INDRAPRASTHA POWER 220/33kV 100MVA Tx-III	20.6.16	15:15	TR. TRIPPED ON BUCHHOLZ.
86	20.6.16	15:17	220kV KANJHAWALA-NAJAFGARH CKT	20.6.16	16:04	AT KHANJAWALA CKT. TRIPPED MAIN 1, RYB PHASE, MAIN 2, YB PHASE , DIST PROT, ZONE2 & 3, DIST 17.54KM. AT NAJAFGARH CKT. DID NOT TRIP.
87	20.6.16	20:16	HARSH VIHAR 400/220kV 315MVA ICT-I	20.6.16	22:26	ICT TRIPPED ON 861, 862, 86PRD I & 2.
88	21.6.16	05:26	PARKSTREET 220/33kV 100MVA Tx-I	21.6.16	06:00	TR. TRIPPED ON 86. BIRDAGE OCCURED IN YARD.
89	22.6.16	05:22	BAWANA 400/220kV 315MVA ICT-II	22.6.16	11:36	ICT TRIPPED ON 186 &B, 86A&B, OLTC AUX, BUCHHOLZ.
90	22.6.16	09:26	PAPPANKALAN-I 220/66kV 160MVA Tx-I	22.6.16	09:28	DURING NORMALIZATION OF 66KV BUS-1 BUS ISOLATOR OF 66KV I/C-5 GOT STUCK CAUSING SPARKING.
91	22.6.16	13:18	220kV DIAL- MEHRAULI CKT-II	22.6.16	14:53	AT DIAL CKT. TRIPPED ON B PHASE TRIP, DIST. PROT, ZONE-I. AT MEHRAULI CKT. TRIPPED ON DIFF, B PHASE, DIST PROT, ZONE-I, DIST 6.161KM.
92	23.6.16	14:44	WAZIRABAD 220/66kV 160MVA Tx-I	23.6.16	15:40	TR. TRIPPED ON O/C, R&Y PHASE, DIFFERENTIAL PROT, B PHASE.
93	23.6.16	22:05	220KV GAZIPUR - MAHARANIBAGH CKT. -II	24.6.16	16:27	AT GAZIPUR CKT. TRIPPED ON Y PHASE, E/F. AT MAHARANI BAGH DIST PROT, ZONE-I.
94	24.6.16	17:52	PAPPANKALAN-I 66kV REWARI LINE CKT	25.6.16	14:25	CKT. TRIPPED ON DIRECTIONAL EARTH FAULT, ZONE-1, 86. Y PHASE POLE OF CB DAMAGED AT PAPPANKALAN-1.
95	24.6.16	20:51	WAZIRPUR 220/33kV 100MVA Tx-I	25.6.16	17:55	TR. TRIPPED ON 86A&B.
96	24.6.16	21:47	PAPPANKALAN-I 220/66kV 100MVA Tx-I	24.6.16	22:14	TR. TRIPPED ON O/C.
97	24.6.16	21:47	PAPPANKALAN-I 220/66kV 160MVA Tx-I	25.6.16	00:43	TR. TRIPPED ON O/C.
98	27.6.16	13:08	SHALIMAR BAGH 220/33kV 100MVA Tx-III	27.6.16	17:34	TR. TRIPPED ON 64 RLV, 87 DIFFERENTIAL.
99	28.6.16	00:06	220kV MEHRAULI - BTPS CKT. - II	28.6.16	05:58	AT MEHRAULI CKT. TRIPPED ON DIST PROT, ZONE-I, DIST 1.812KM. AT BTPS TRIPPED ON DIST PROT, B PHASE, ZONE-II.
100	28.6.16	01:25	SARITA VIHAR 66/11kV, 20MVA Tx-I	28.6.16	05:05	11KV I/C TRIPPED ON O/C WITH HEAVY JERK, SMOKE IN VCB ROOM.
101	28.6.16	01:55	PATPARGANJ 33/11kV, 20MVA Tx	28.6.16	03:00	TR. TRIPPED WITHOUT INDICATOIN.
102	28.6.16	02:05	GAZIPUR 220/66kV 160MVA Tx-I	28.6.16	07:55	TR. TRIP ON 86, PRV TRIP.
103	28.6.16	02:38	PATPARGANJ 33/11kV, 16MVA Tx	28.6.16	03:00	TR. TRIPPED ON O/C.
104	28.6.16	07:43	ROHINI 220/66kV 100MVA Tx-III	28.6.16	08:05	TR. TRIPPED ON E/F, 86.
105	28.6.16	07:43	ROHINI 220/66kV 100MVA Tx-IV	28.6.16	08:05	TR. TRIPPED ON 86.
106	28.6.16	15:30	MASJID MOTH 220/33kV 100MVA Tx-I	28.6.16	19:00	TR. TRIPPED ON PRV, O/C.
107	28.6.16	17:45	PATPARGANJ 220/33kV 100MVA Tx-III	28.6.16	18:19	TR. TRIPPED ON 67A.
108	28.6.16	17:45	PATPARGANJ 220/33kV 100MVA Tx-IV	28.6.16	18:19	TR. TRIPPED ON 86.

SL NO	OCCURRENCE OF BREAK-DOWN		DETAILS OF THE BREAKDOWN	TIME OF RESTORATION		REMARKS
	DATE	TIME		DATE	TIME	
109	28.6.16	17:45	PATPARGANJ 220/33kv 100MVA Tx-I	28.6.16	18:19	TR. TRIPPED WITHOUT INDICATION.
110	28.6.16	20:45	PATPARGANJ 33/11kv, 20MVA Tx	28.6.16	20:50	11kv I/C TRIPPED ON O/C, R&B PHASE RELAY.
111	28.6.16	21:57	NAJAFGARH 220/66kv 100MVA Tx-I	28.6.16	22:48	TR. TRIPPED ON 86.
112	28.6.16	21:57	MUNDKA 400/220KV 315MVA ICT-III	28.6.16	22:37	ICT TRIPPED ON O/C, 86.
113	28.6.16	21:57	MUNDKA 400/220kv 315MVA ICT-IV	28.6.16	22:38	ICT TRIPPED ON O/C, 86.
114	28.6.16	21:57	220kv MUNDKA-NAJAFGARH CKT	29.6.16	02:14	AT MUNDKA CKT. TRIPPED ON AUTO RECLOSE, TRIP PHASE ABC. AT NAJAFGARH CKT. TRIPPED ON 186.
115	29.6.16	06:52	ROHINI 220/66kv 100MVA Tx-I	29.6.16	07:12	66KV I/C-I TRIPPED ON 86, 51N, E/F.
116	29.6.16	06:52	ROHINI 220/66kv 100MVA Tx-II	29.6.16	07:12	66KV I/C TRIPPED ON E/F, 86.
117	29.6.16	17:22	220kv WAZIRABAD - KASHMERE GATE CKT-II	29.6.16	17:53	AT WAZIRABAD CKT. TRIPPED ON DIST PROT, Y PHASE, ZONE-I, DIST 1.023KM. AT KASHMIRI GATE CKT. DID NOT TRIP.
118	29.6.16	18:11	220KVBAWANA- ROHINI CKT-II	29.6.16	18:12	AT ROHINI CKT. TRIPPED WITHOUT INDICATION AT BAWANA CKT. DID NOT TRIP.
119	30.6.16	08:28	MASJID MOTH 220/33kv 100MVA Tx-II	30.6.16	09:45	33KV I/C TRIPPED ON CB TROUBLE ALARM, GAS PRESSURE LOW.
120	30.6.16	09:55	MASJID MOTH 220/33kv 100MVA Tx-II	30.6.16	15:05	33KV I/C TRIPPED ON CB TROUBLE ALARM, GAS PRESSURE LOW.

**20      DETAILS OF UNDER FREQUENCY RELAY OPERATIONS IN DELHI POWER SYSTEM DURING THE MONTH OF JUNE 2016**

DATE	S. N.	TIME		Name of Grid	NAME OF AFFECTED FEEDERS	MODE	LOAD RELIEF IN MW
		OUT	IN				
				NIL			